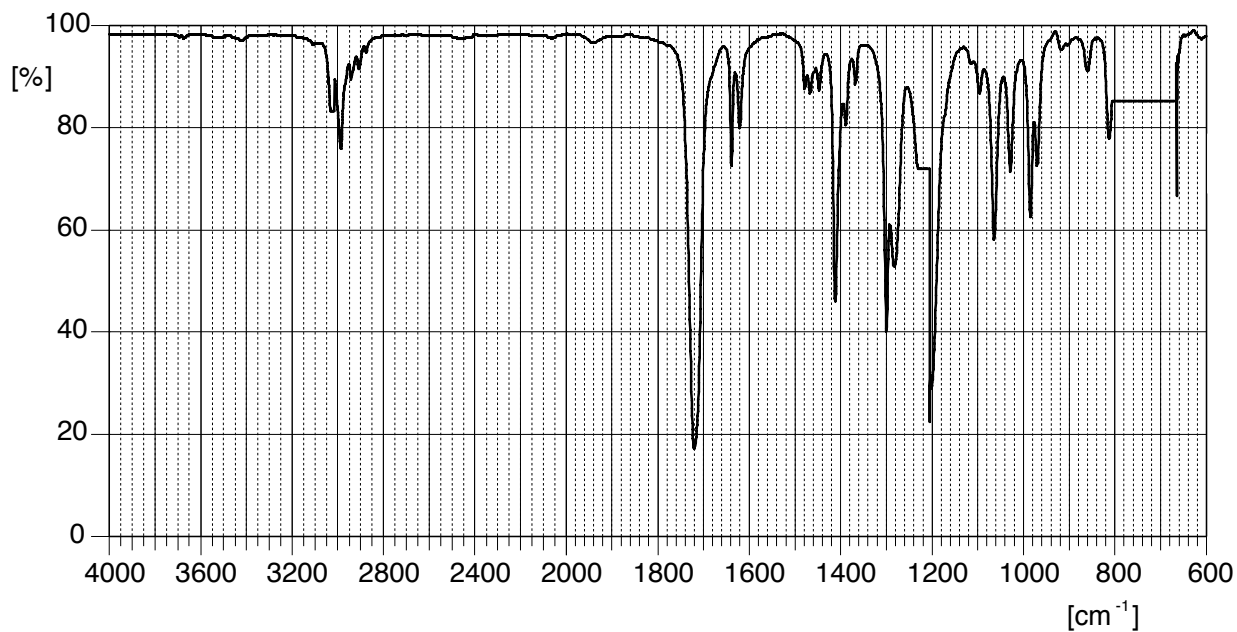
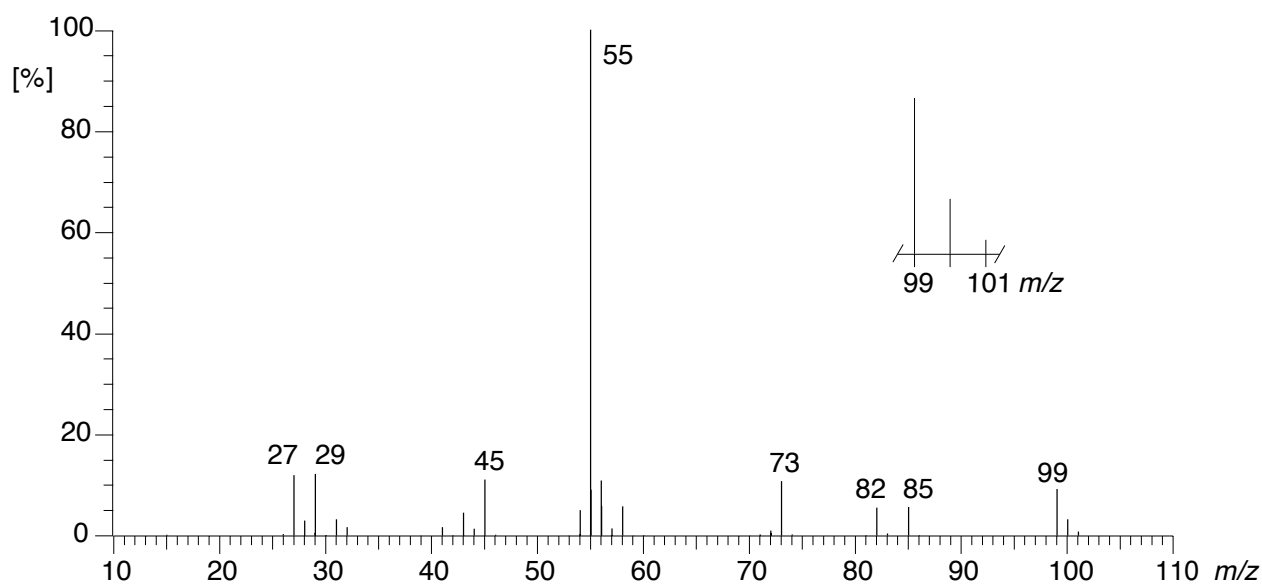
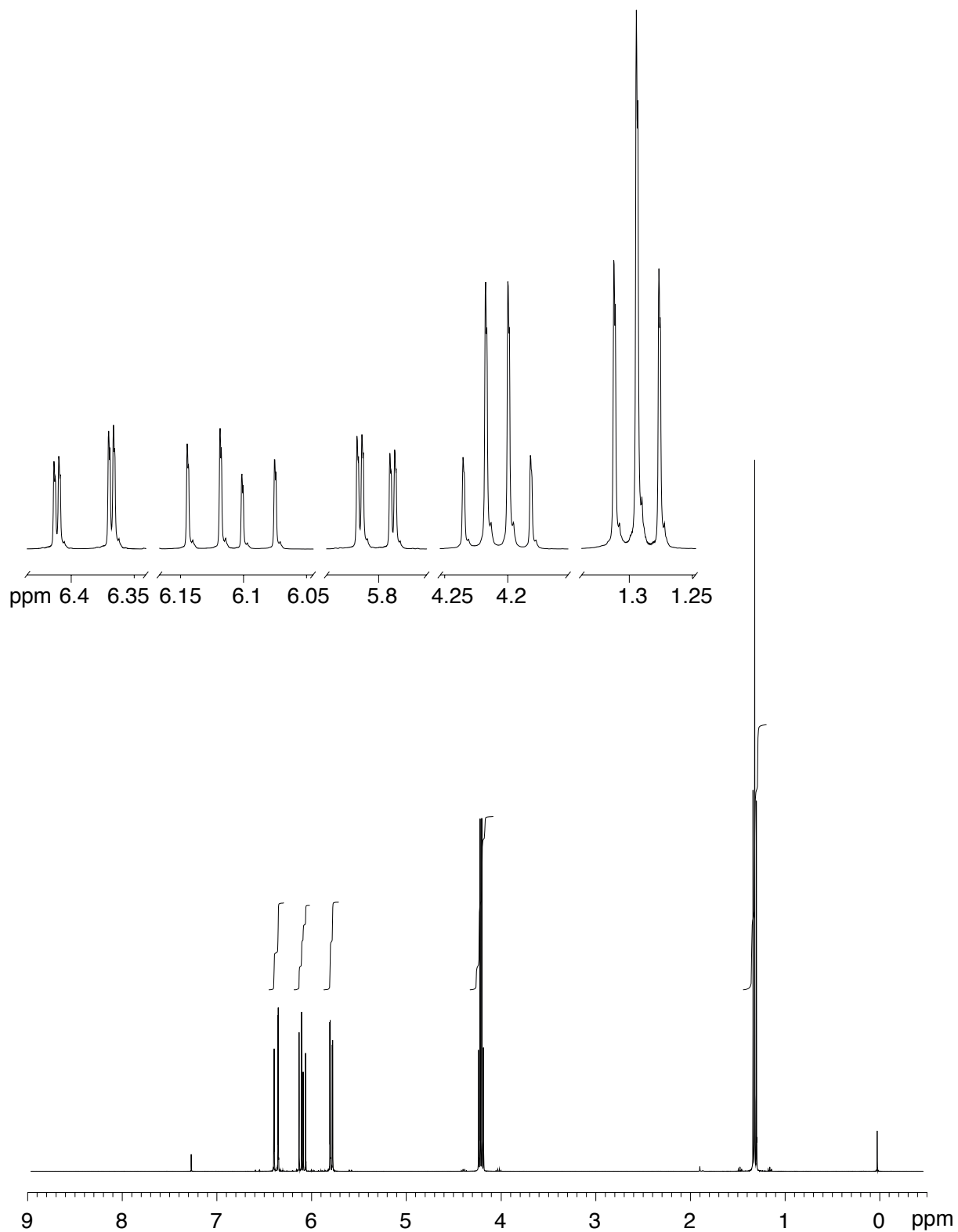


**IR:** Perkin Elmer Modell Spectrum 100  
 CHCl<sub>3</sub>



**MS:** EI, 75 eV



**<sup>1</sup>H-NMR:** 400 MHz, aufgenommen in CDCl<sub>3</sub>

**<sup>13</sup>C-NMR:** 100 MHz, aufgenommen in CDCl<sub>3</sub>  
 oben: breitband-entkoppelt  
 unten: DEPT

