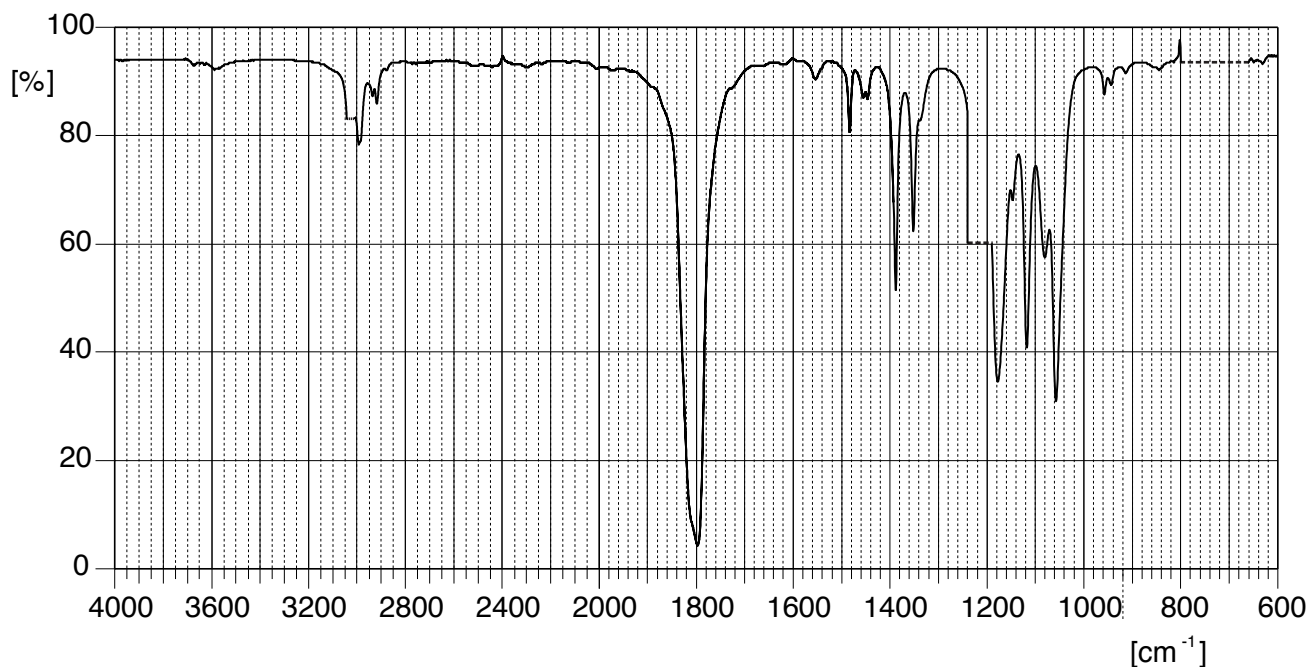
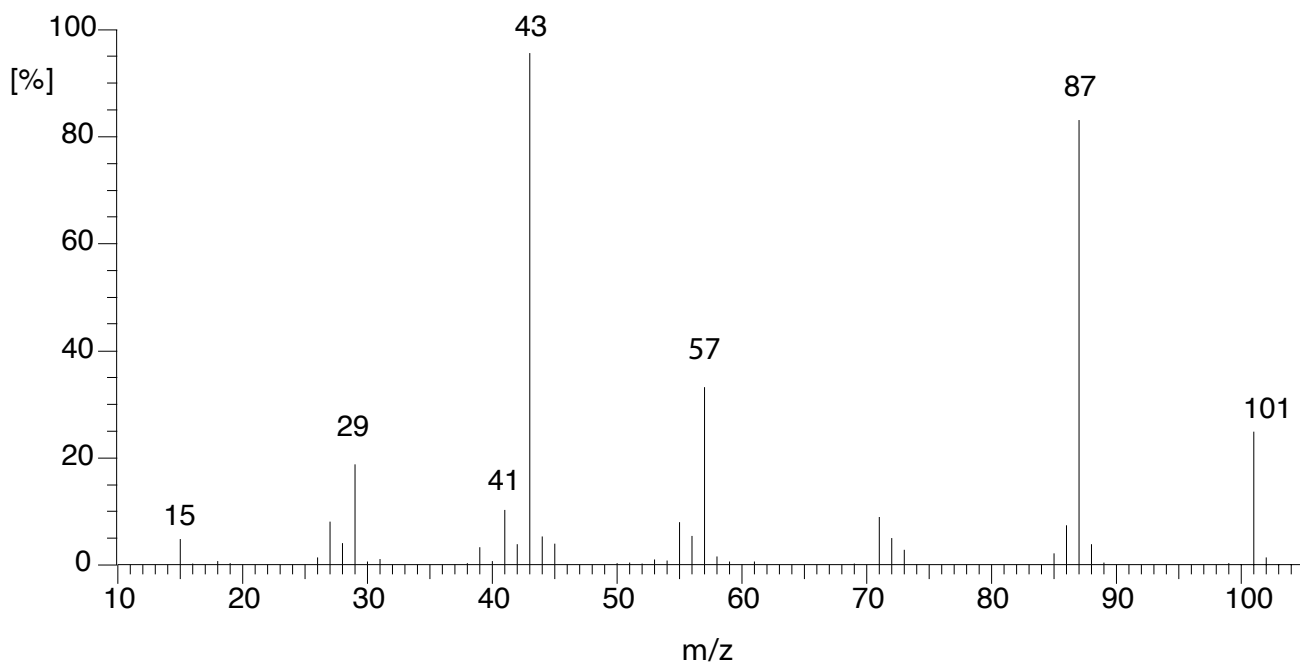


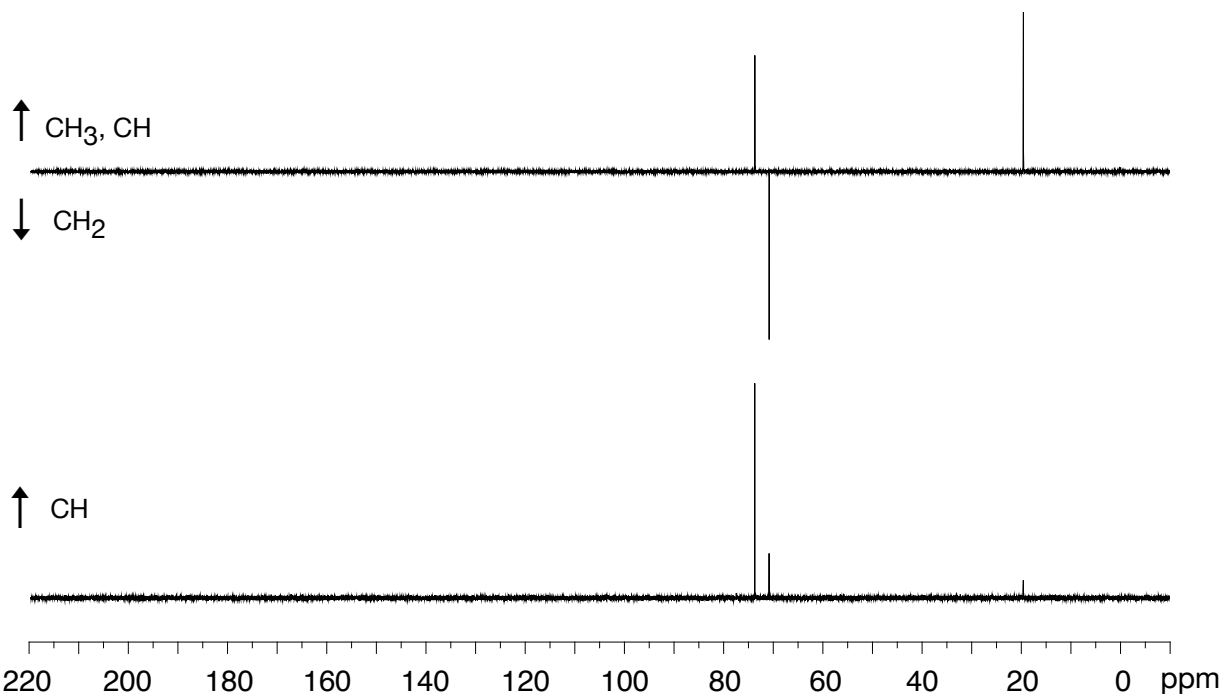
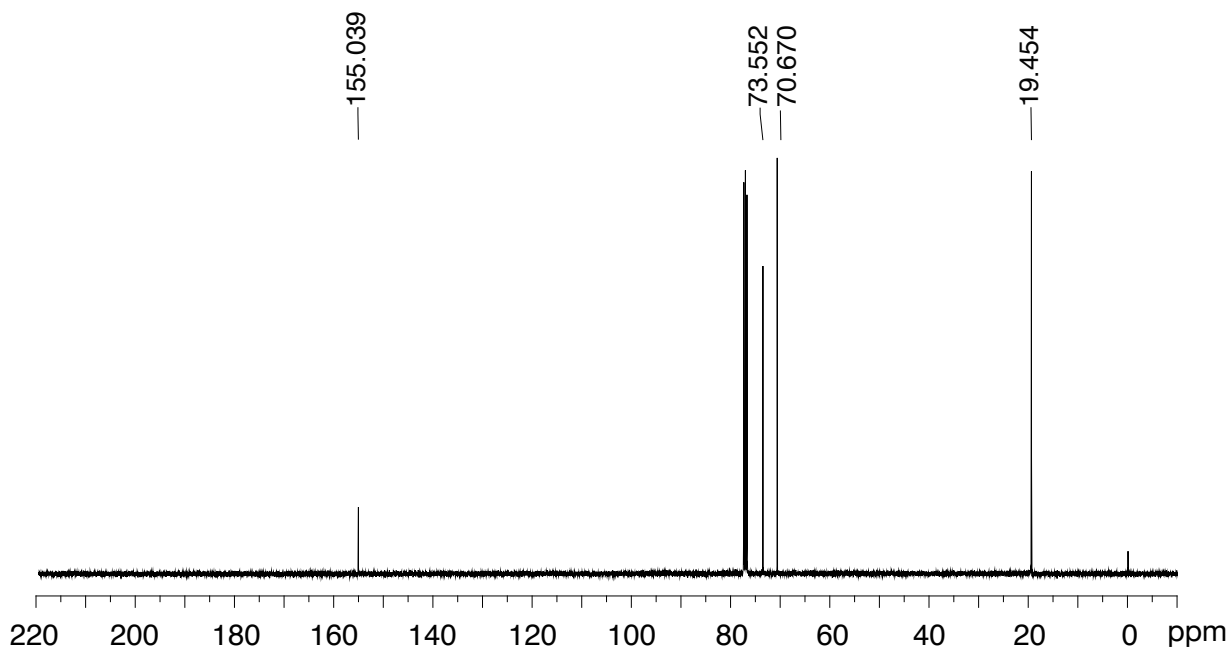
IR: Perkin-Elmer Modell Spectrum 100
 aufgenommen in CHCl_3

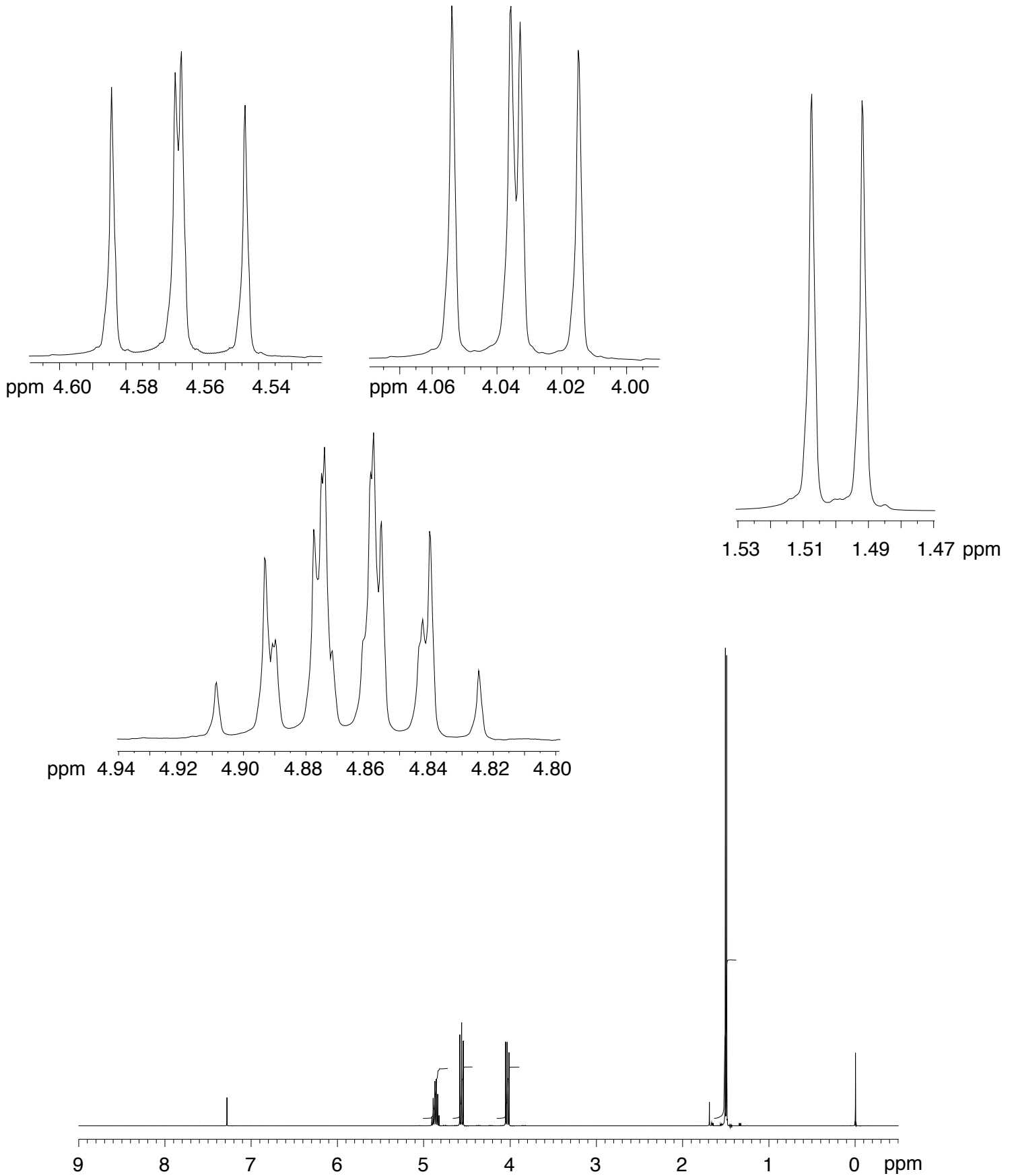


MS: EI, 75 eV, SDBS-Nr.: 486

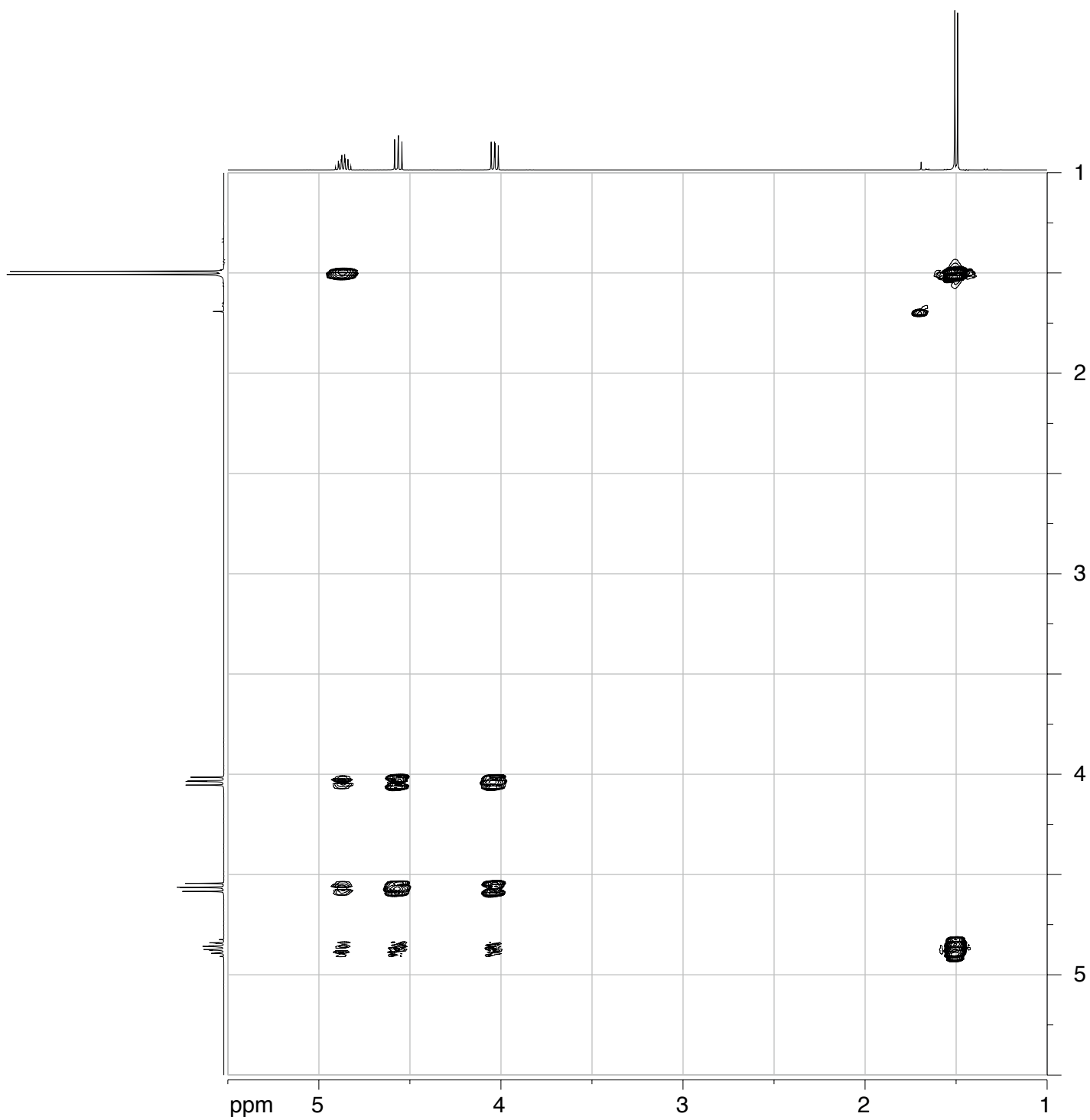


¹³C-NMR: 100 MHz, aufgenommen in CDCl₃
 oben: breitband-entkoppelt
 unten: DEPT





^1H - ^1H -COSY: 400 MHz, aufgenommen in CDCl_3



HSQC: aufgenommen in CDCl_3 