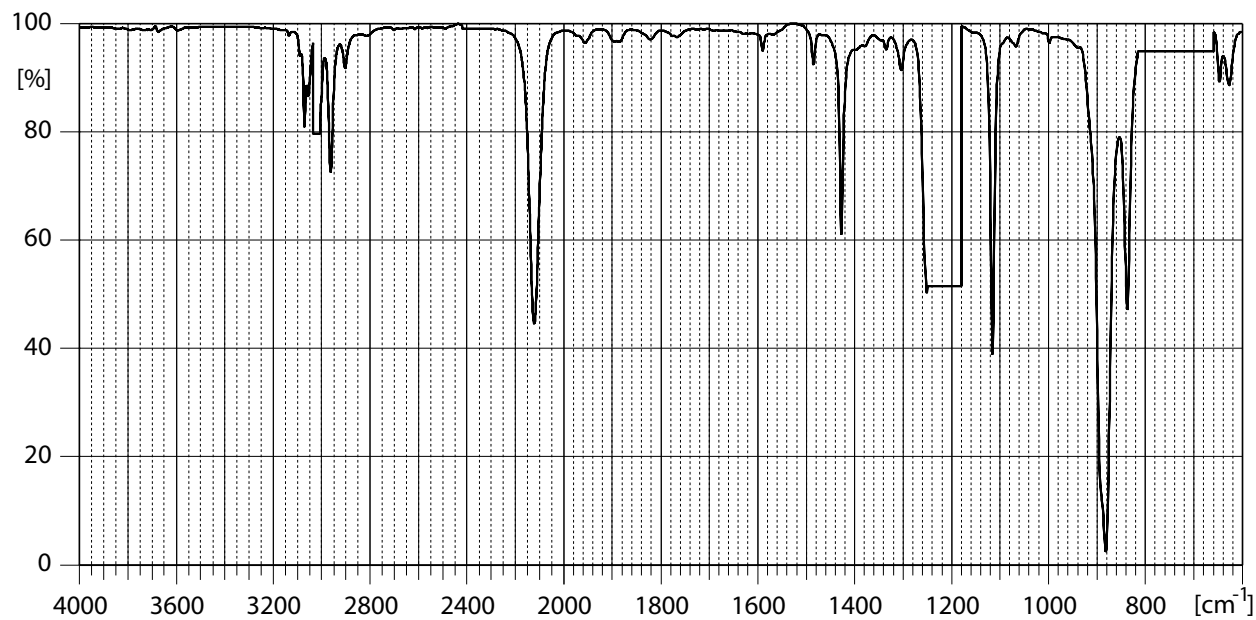
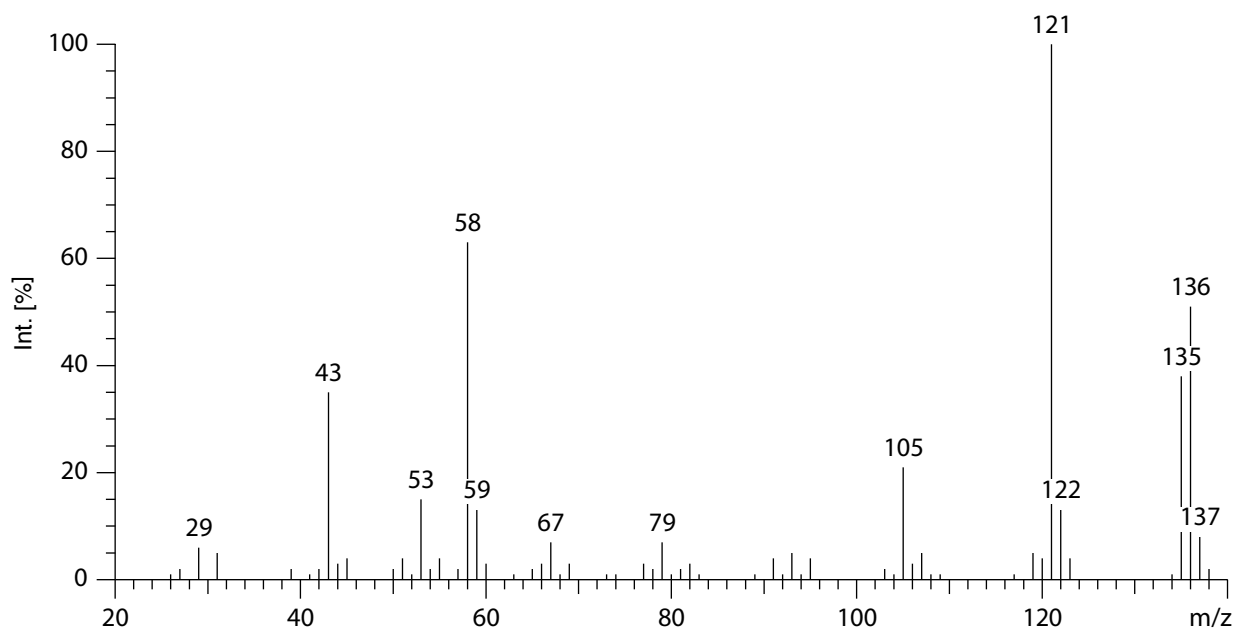


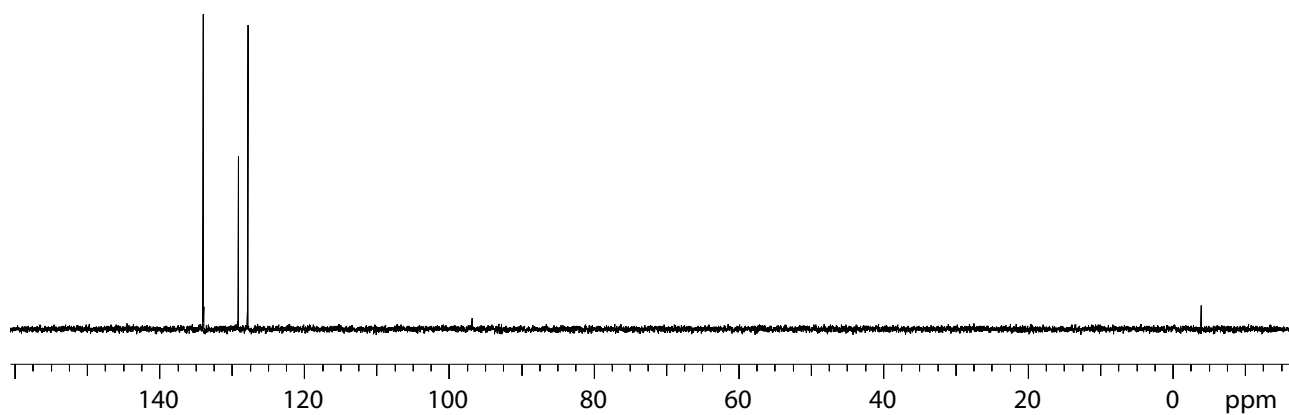
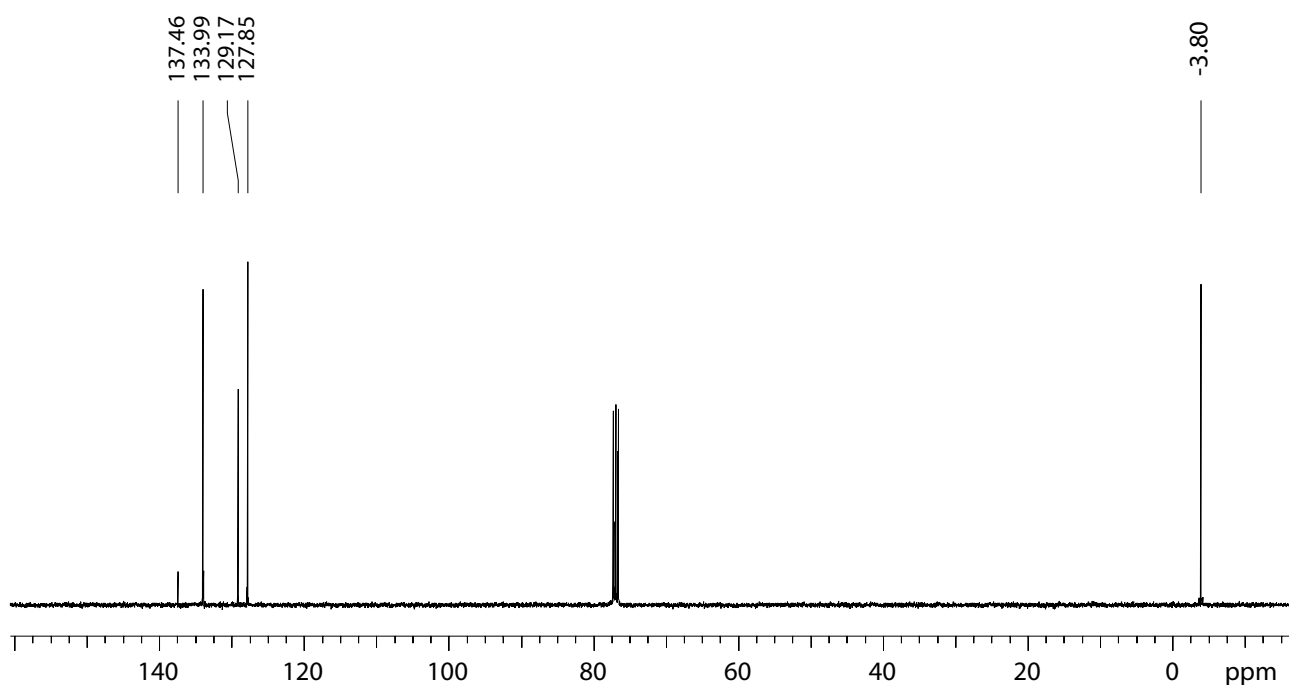
IR: Perkin-Elmer Modell Spectrum BX FT-IR
aufgenommen in CHCl_3



MS: EI, MS Wiley Registry Database



¹³C-NMR: 100 MHz, aufgenommen in CDCl₃
 oben: breitband-entkoppelt
 unten: DEPT



$^1\text{H-NMR}$: 400 MHz, aufgenommen in CDCl_3

