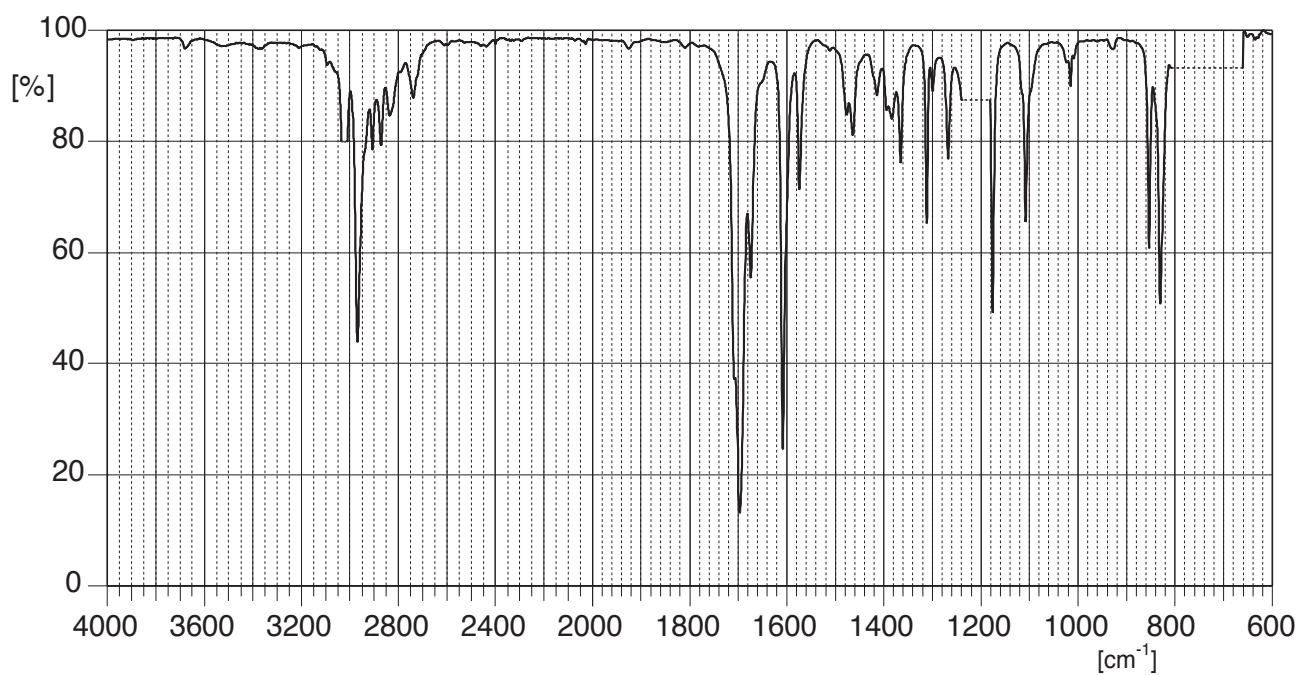
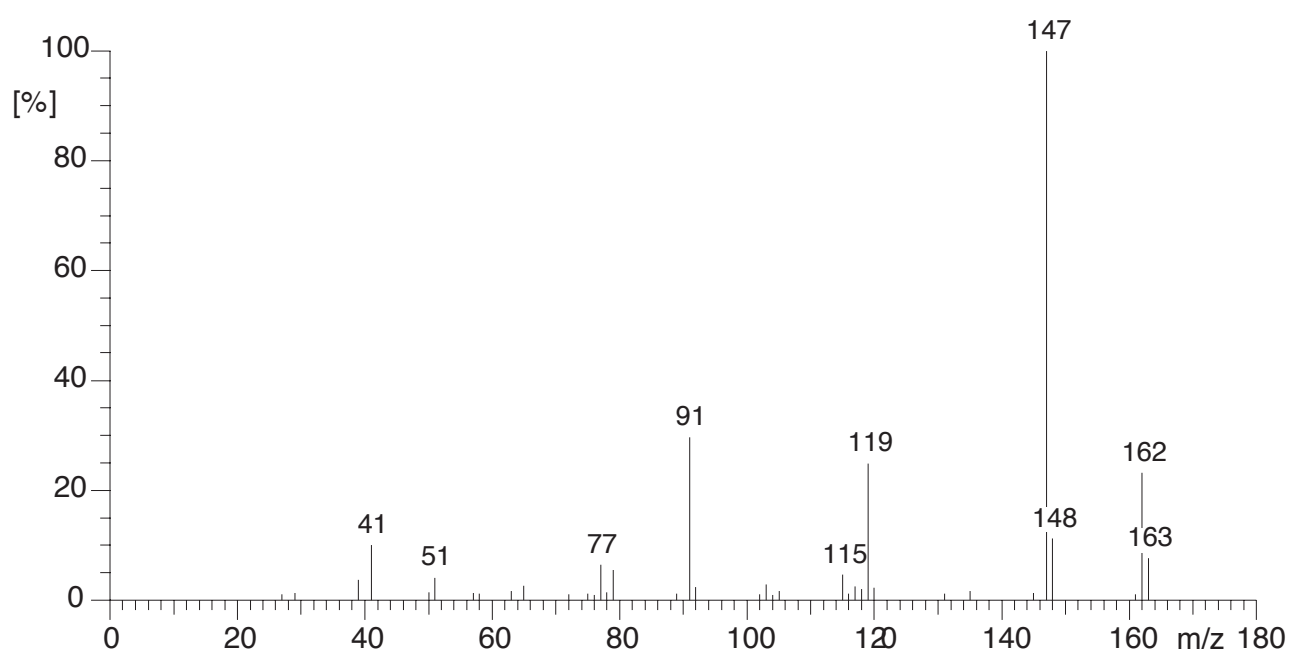


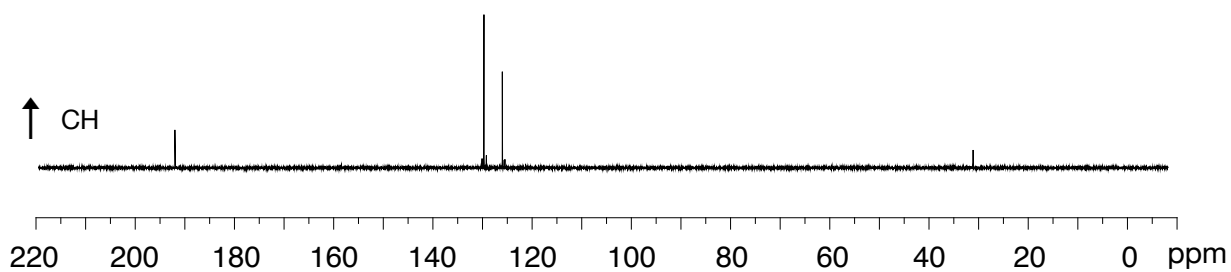
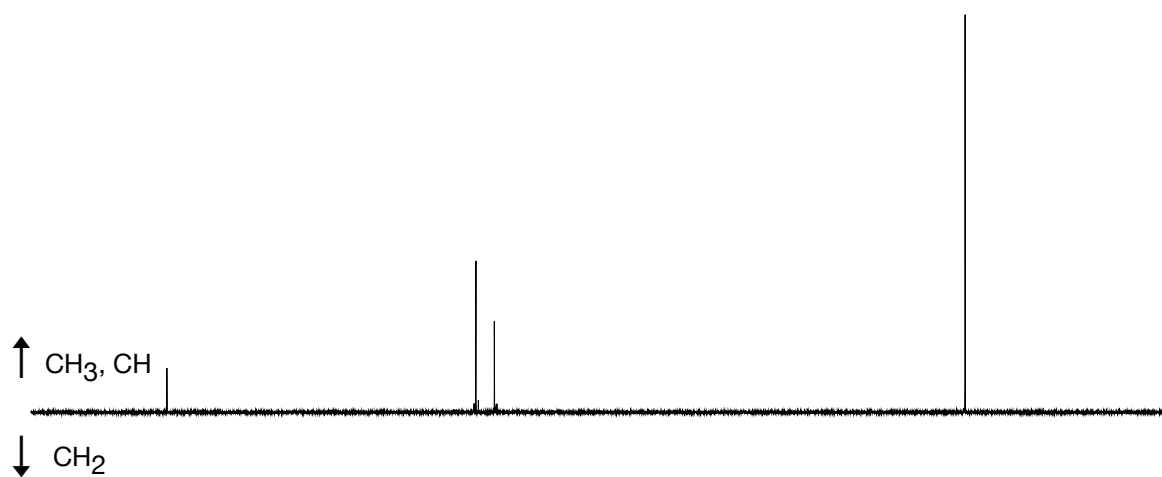
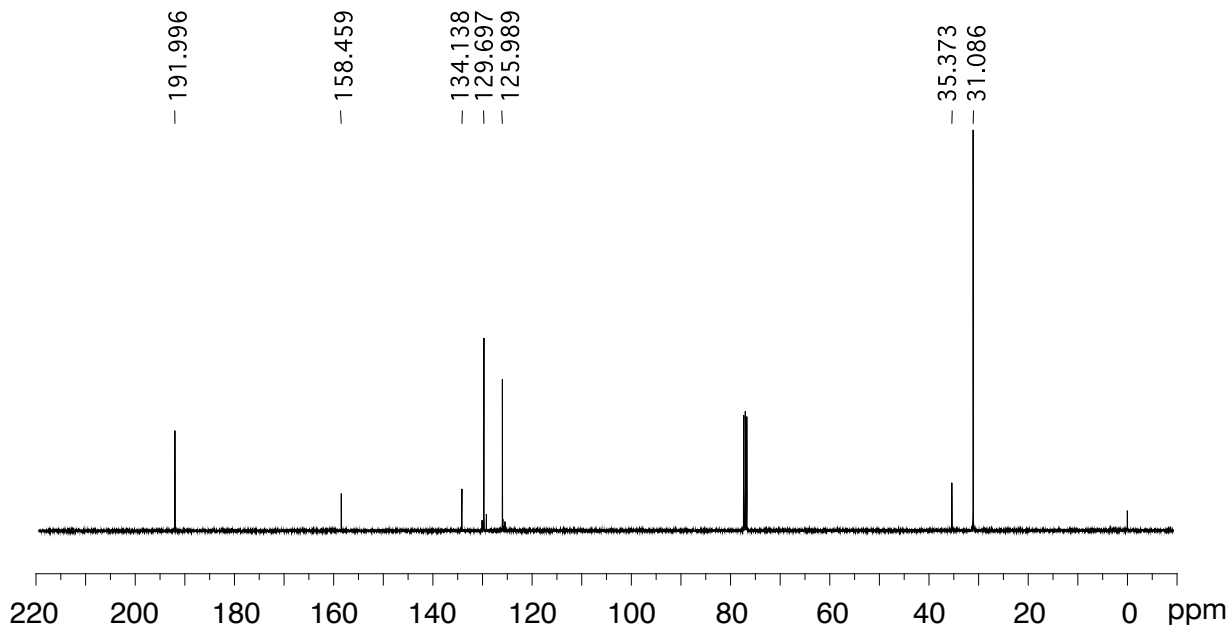
IR: Perkin-Elmer Modell Spectrum 100  
aufgenommen in  $\text{CHCl}_3$



MS: EI, 75 eV, Quelle: MS-IW-8147 SDBS Nr. 19680



**<sup>13</sup>C-NMR:** 100 MHz, aufgenommen in CDCl<sub>3</sub>  
 oben: breitband-entkoppelt  
 unten: DEPT



$^1\text{H-NMR}$ : 300 MHz, aufgenommen in  $\text{CDCl}_3$

