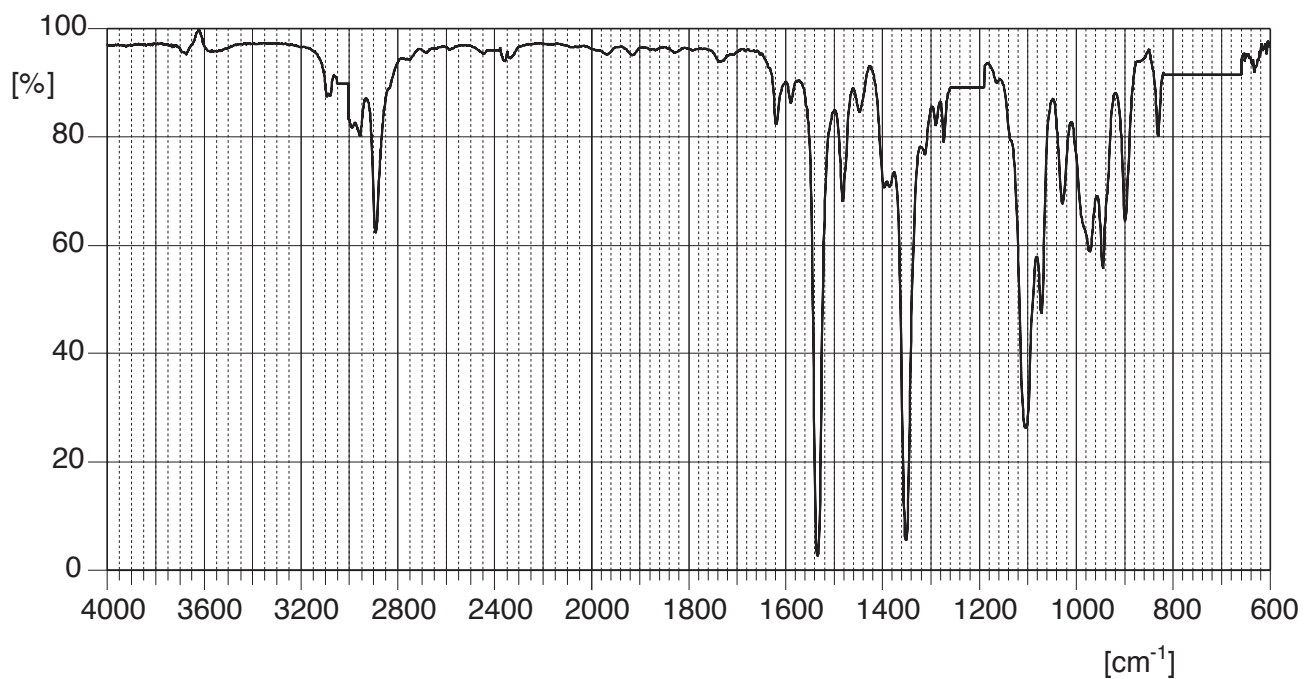
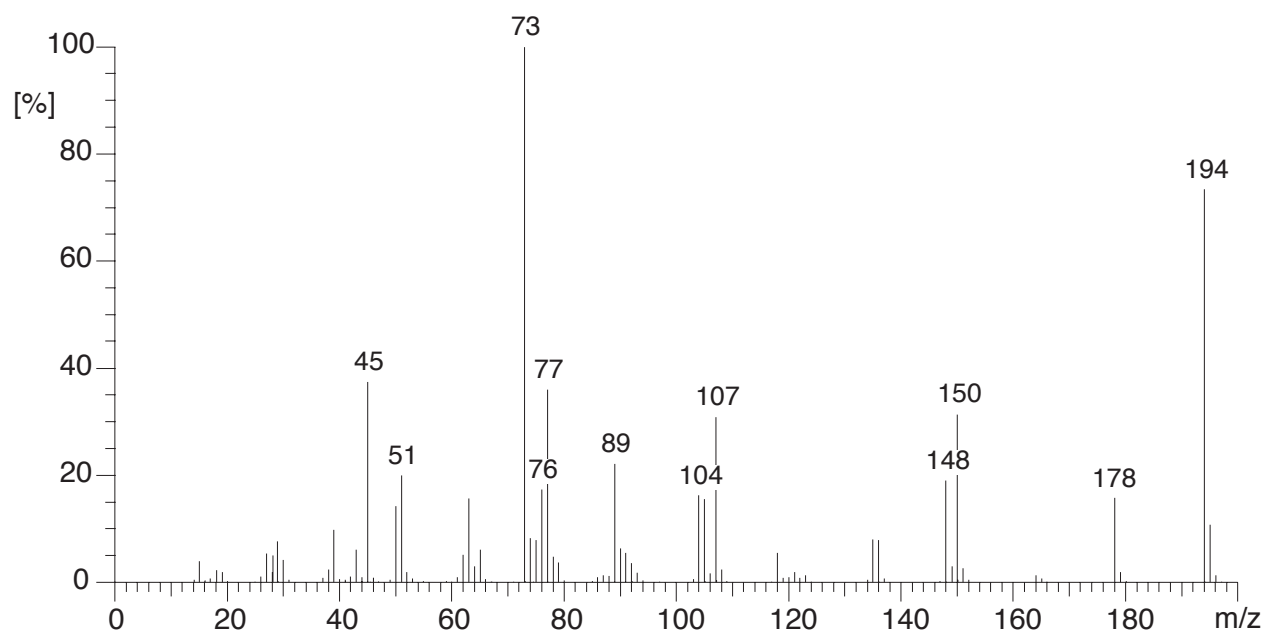


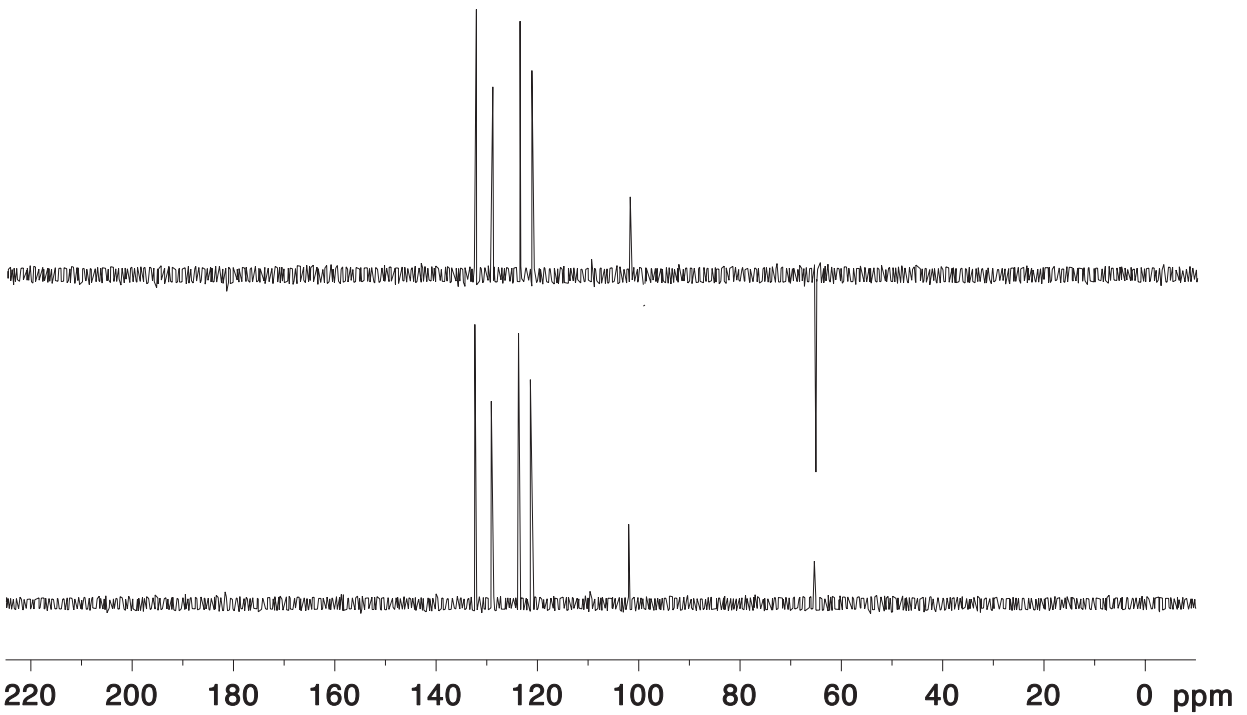
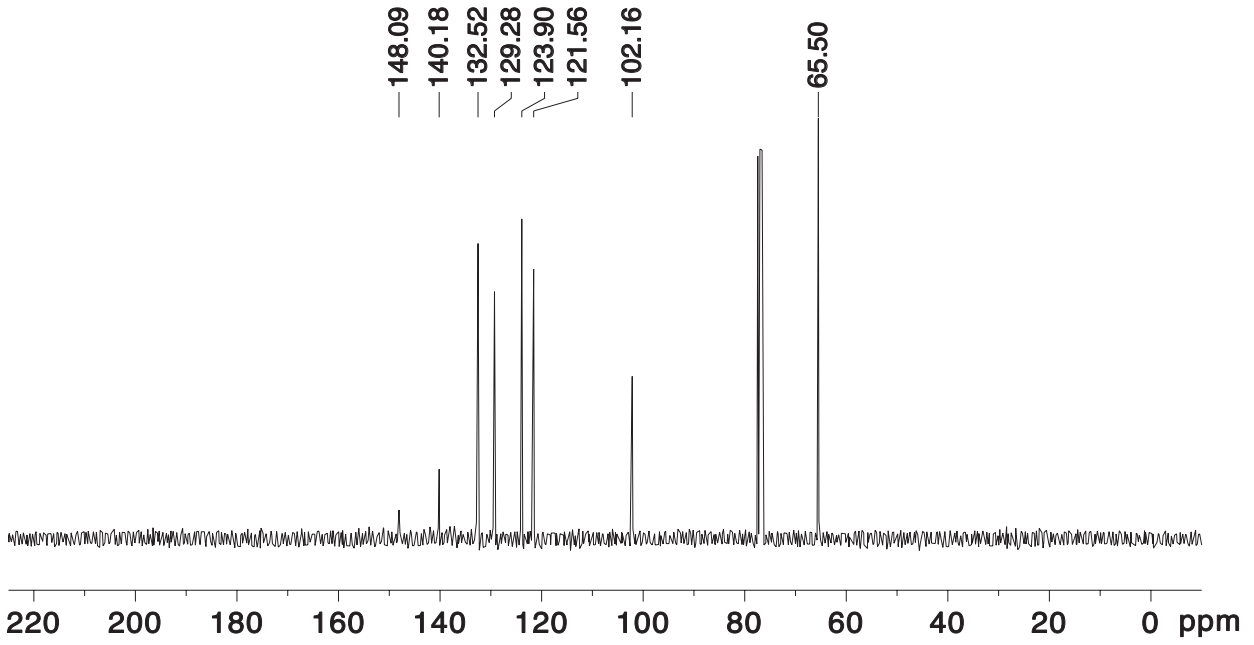
IR: Perkin-Elmer Modell Spectrum FT-IR 1600
aufgenommen in CHCl_3



MS: EI, 70 eV



^{13}C -NMR: 75 MHz, aufgenommen in CDCl_3
oben: breitband-entkoppelt
unten: DEPT



$^1\text{H-NMR}$: 300 MHz, aufgenommen in CDCl_3

