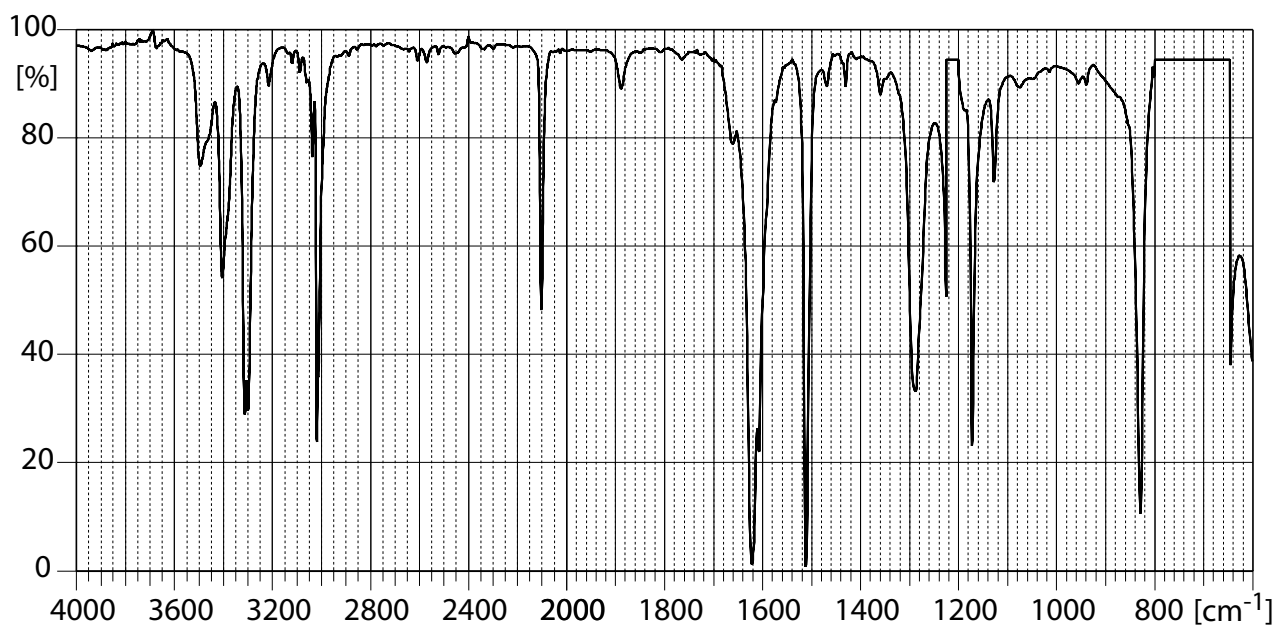
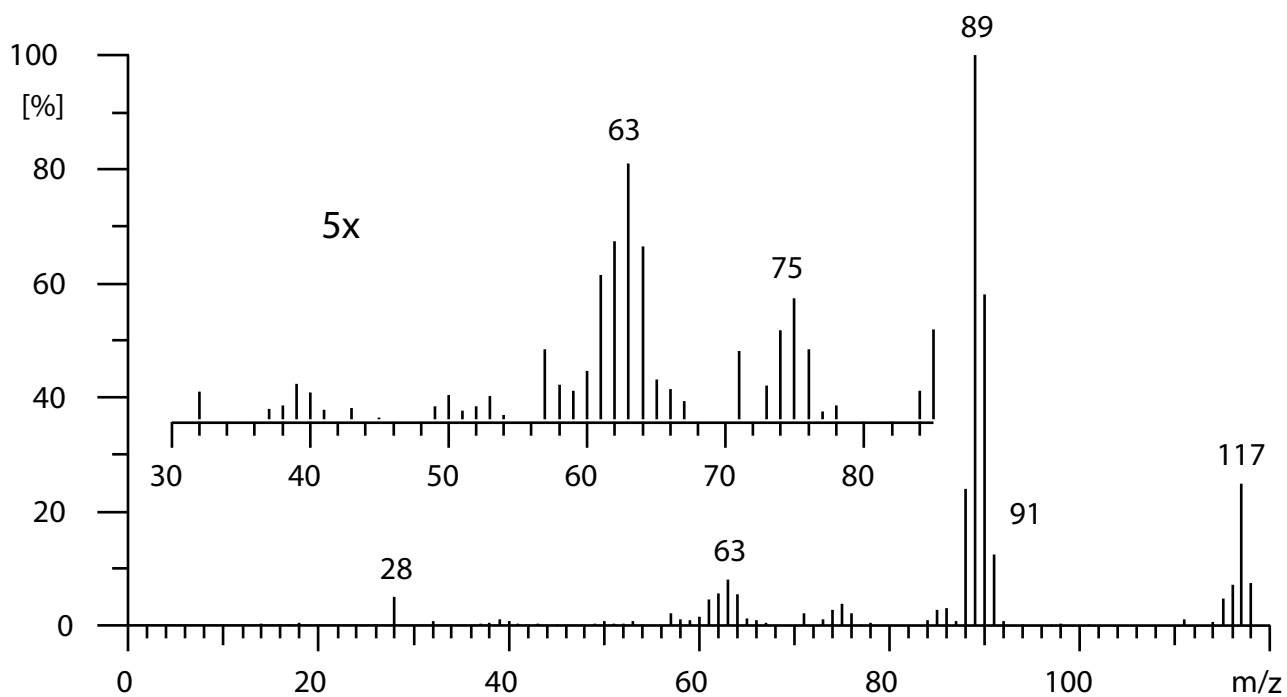


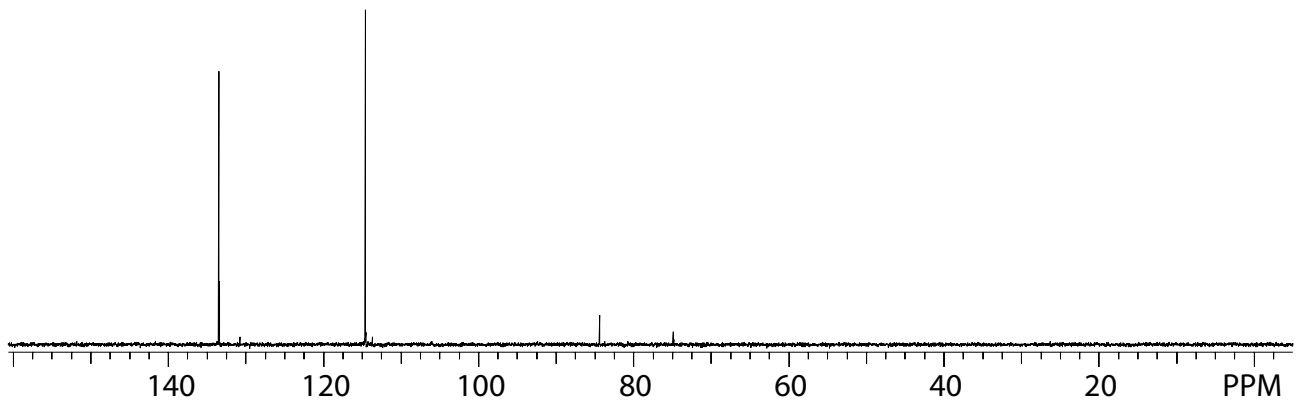
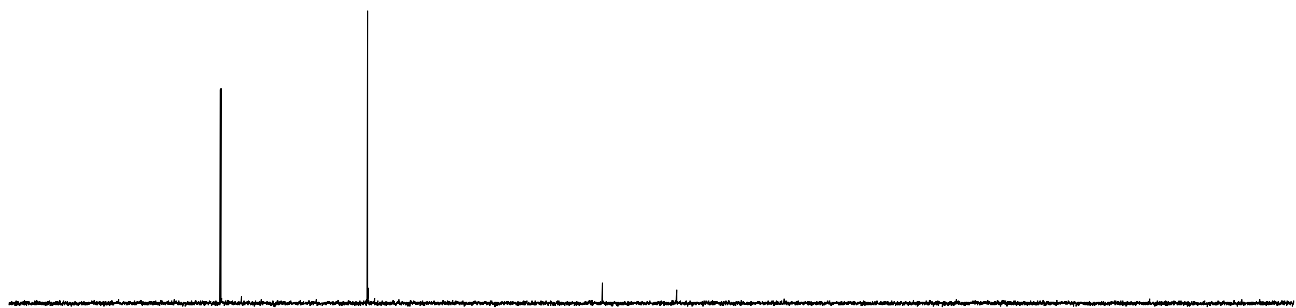
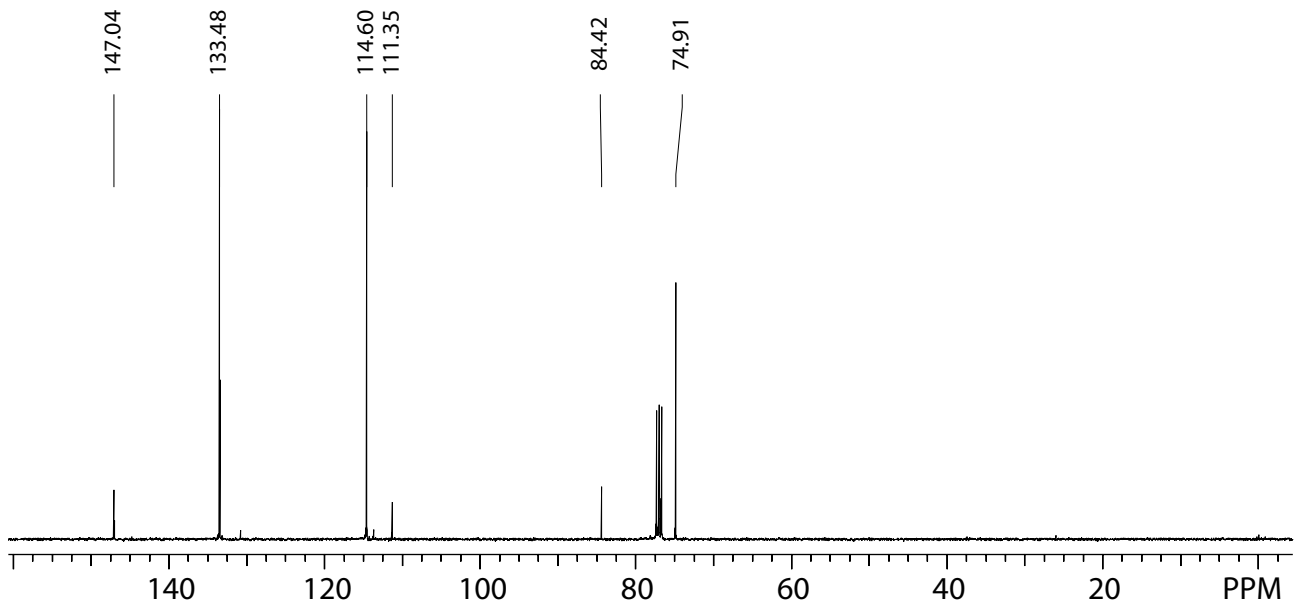
IR: Perkin-Elmer Modell Spectrum BX FT-IR
aufgenommen in CHCl_3



MS: EI, 70 eV



^{13}C -NMR: 100 MHz, aufgenommen in CDCl_3
oben: breitband-entkoppelt
unten: DEPT



$^1\text{H-NMR}$: 400 MHz, aufgenommen in CDCl_3

