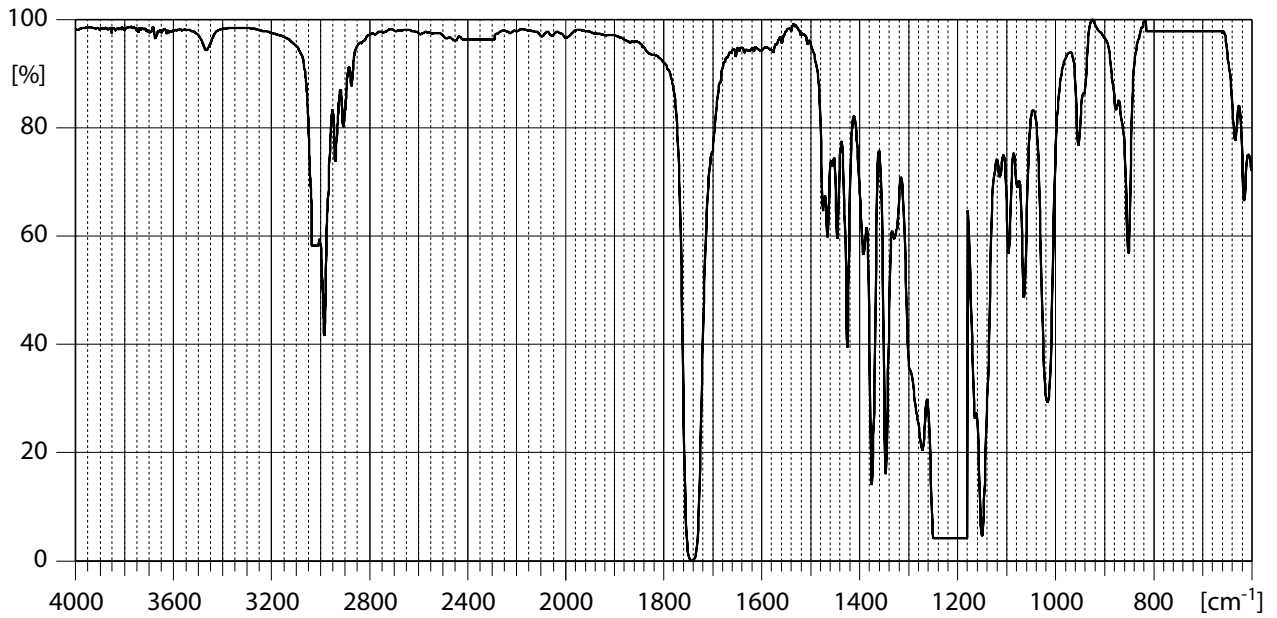
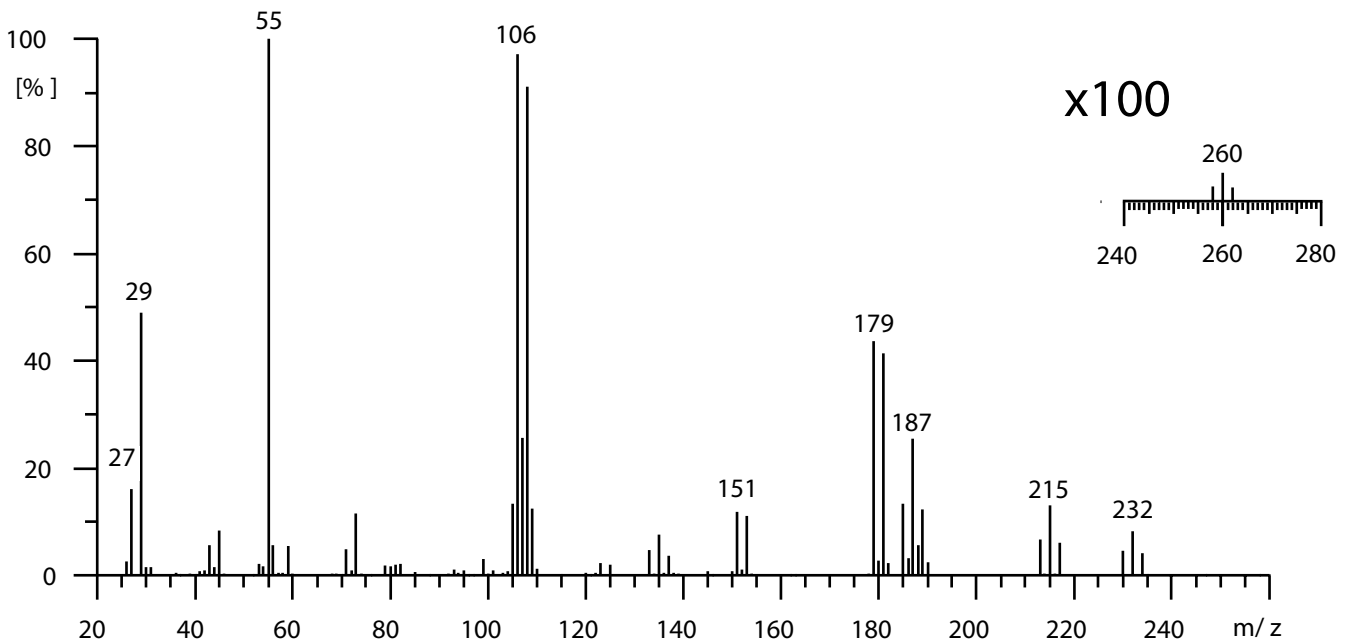


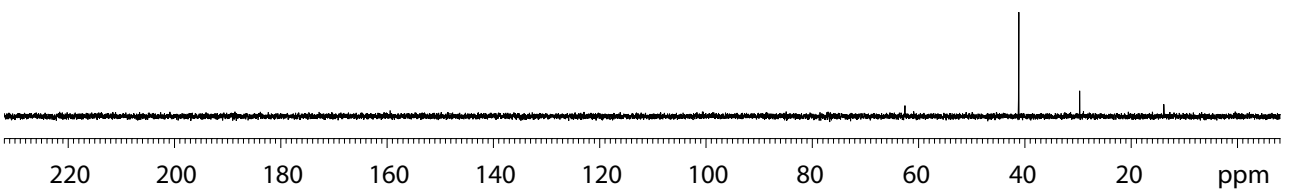
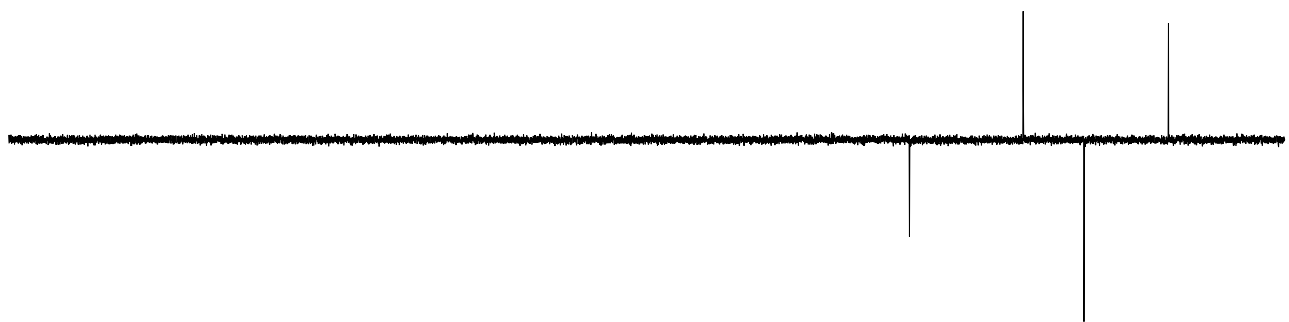
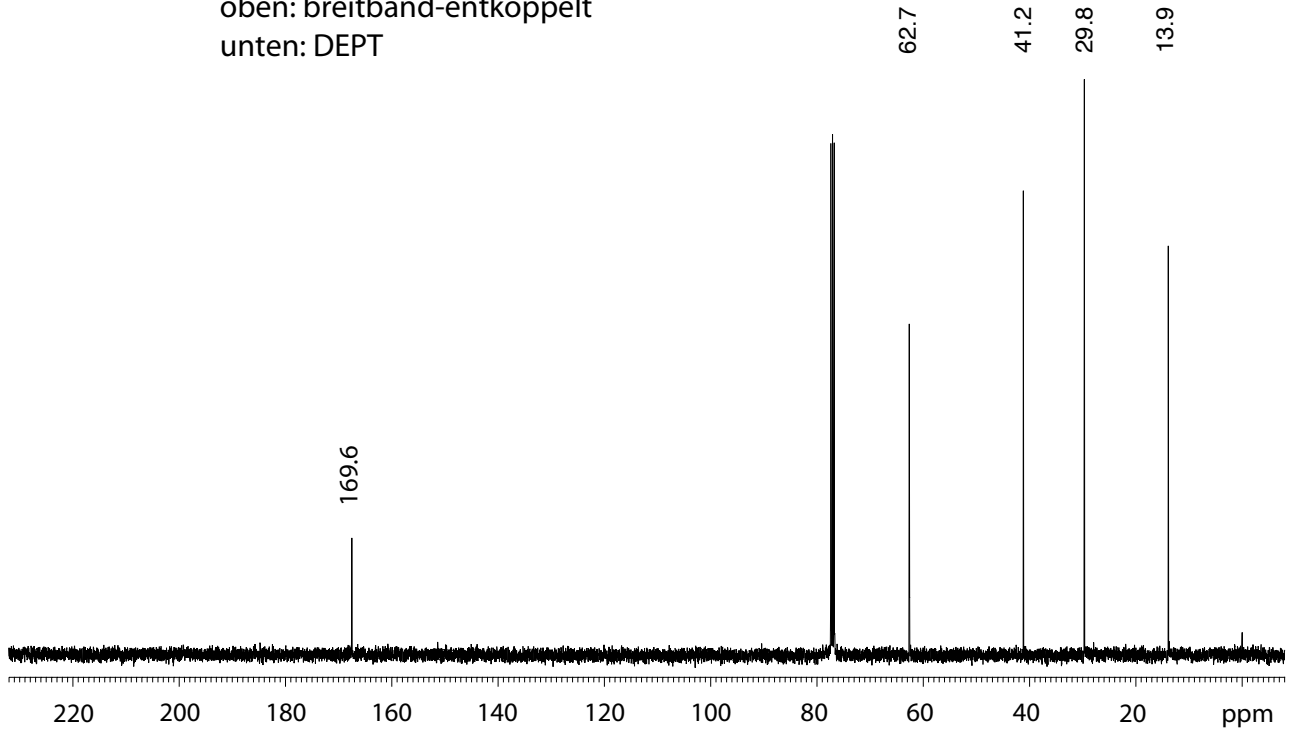
**IR:** Perkin-Elmer Modell Spectrum BX FT-IR  
 aufgenommen in  $\text{CHCl}_3$



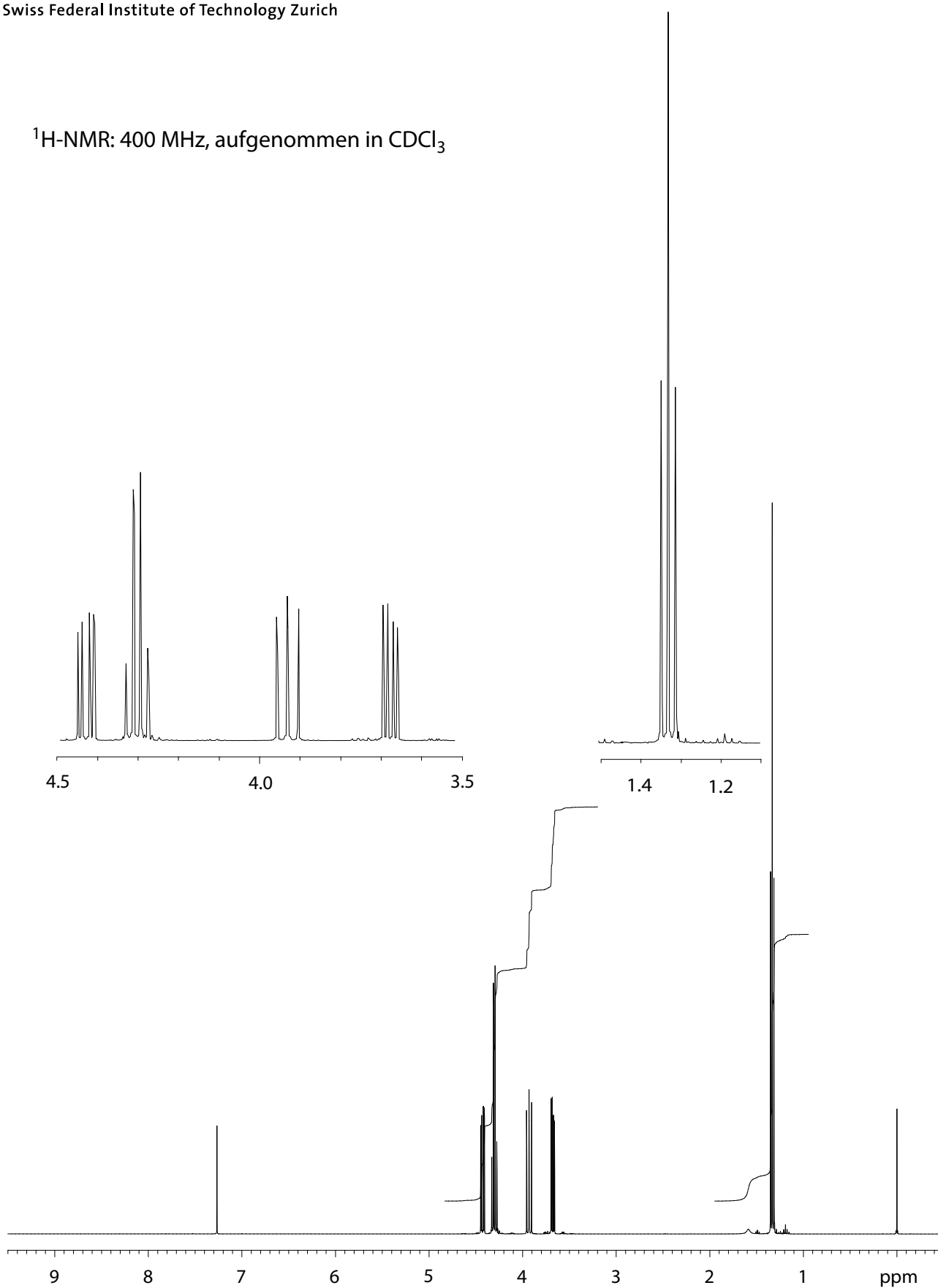
**MS:** EI, 70 eV



**$^{13}\text{C}$ -NMR:** 100 MHz, aufgenommen in  $\text{CDCl}_3$   
oben: breitband-entkoppelt  
unten: DEPT



$^1\text{H-NMR}$ : 400 MHz, aufgenommen in  $\text{CDCl}_3$



**HSQC:** aufgenommen in  $\text{CDCl}_3$ 