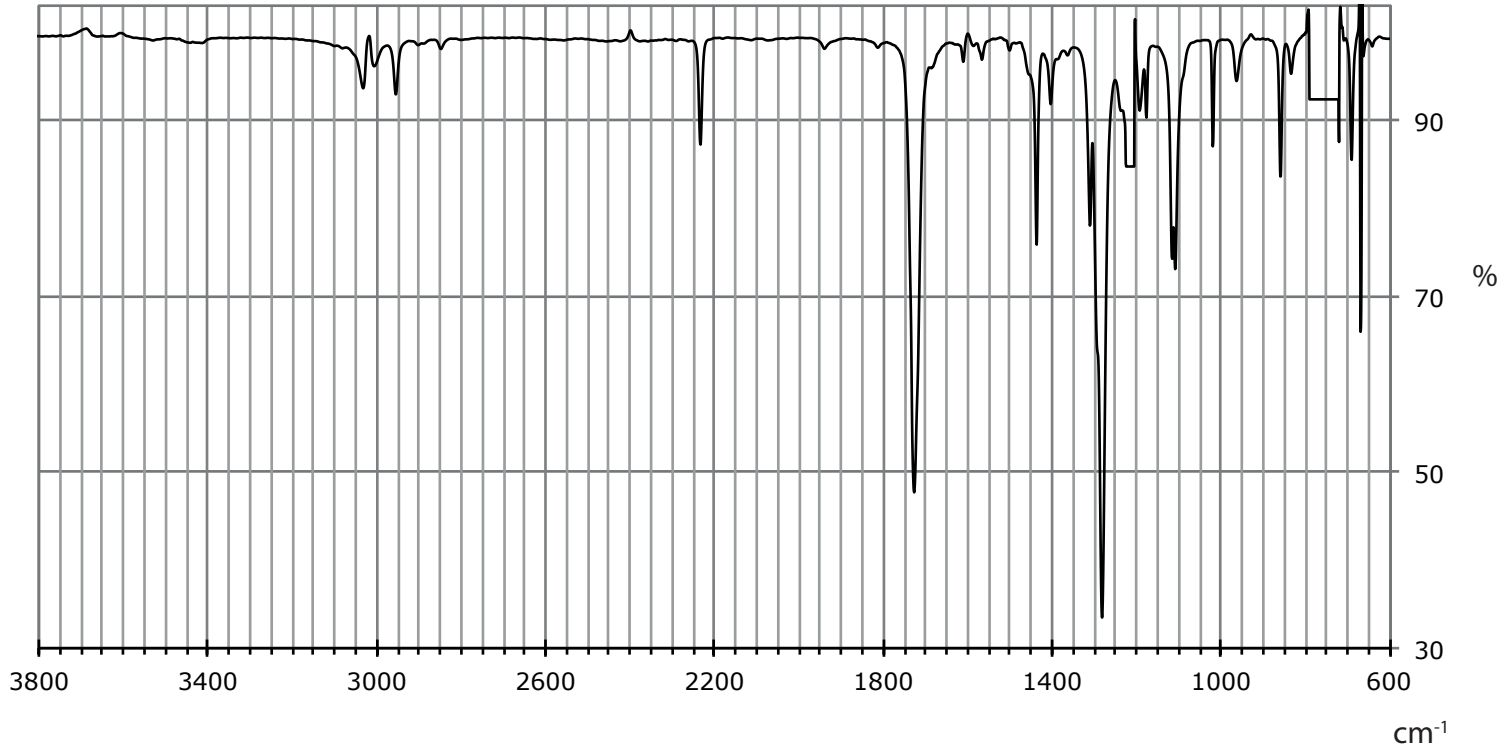
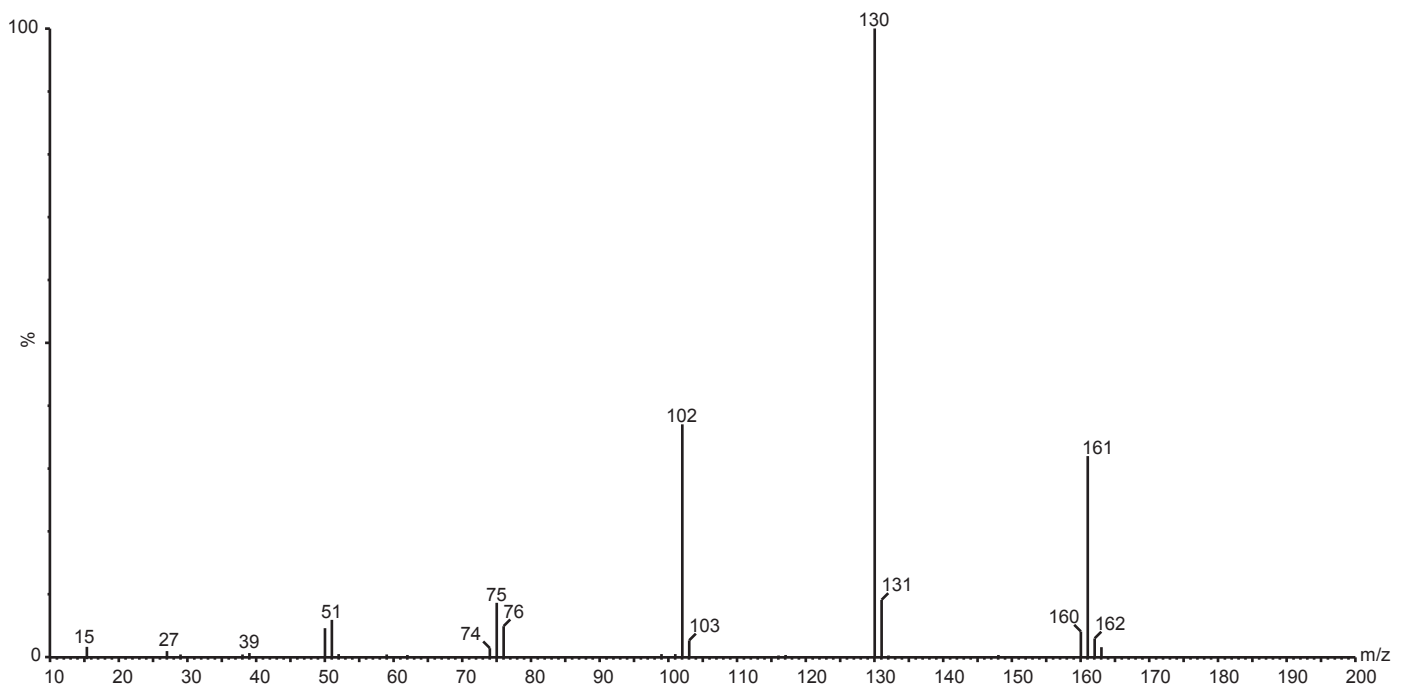
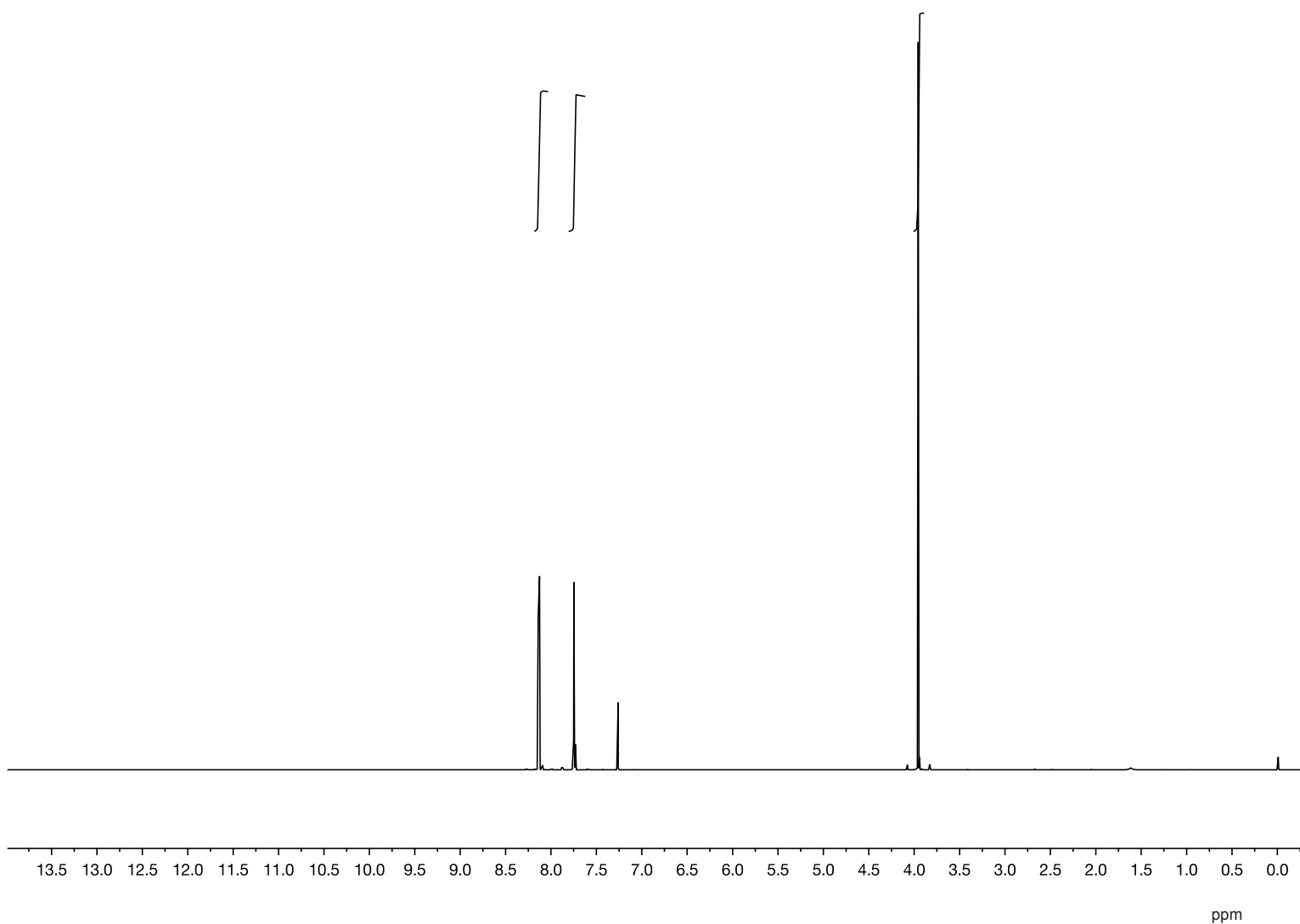
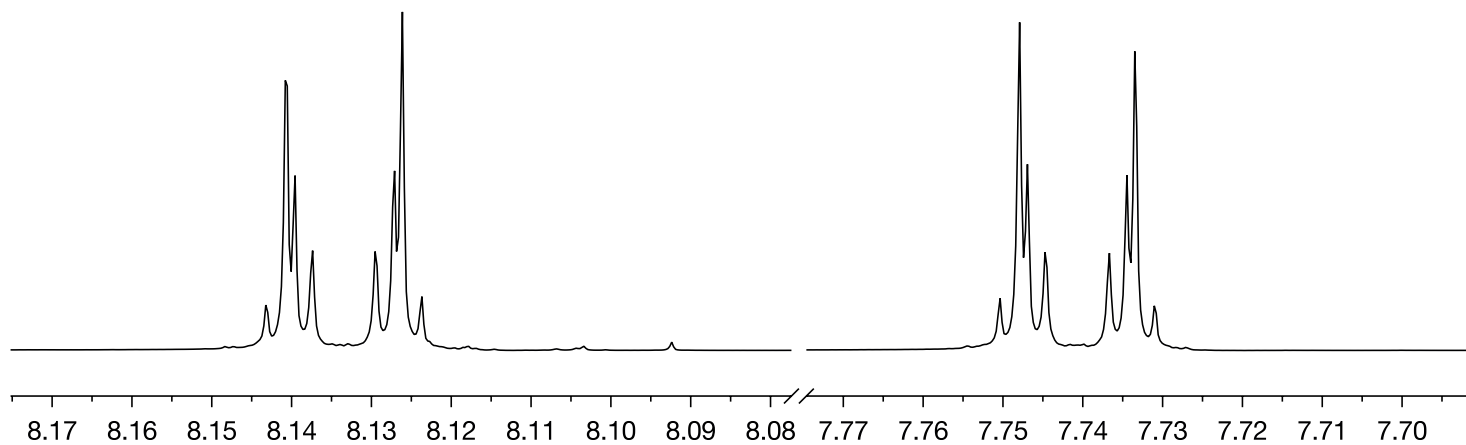


IR: Perkin Elmer Modell Spectrum 100, aufgenommen in  $\text{CHCl}_3$

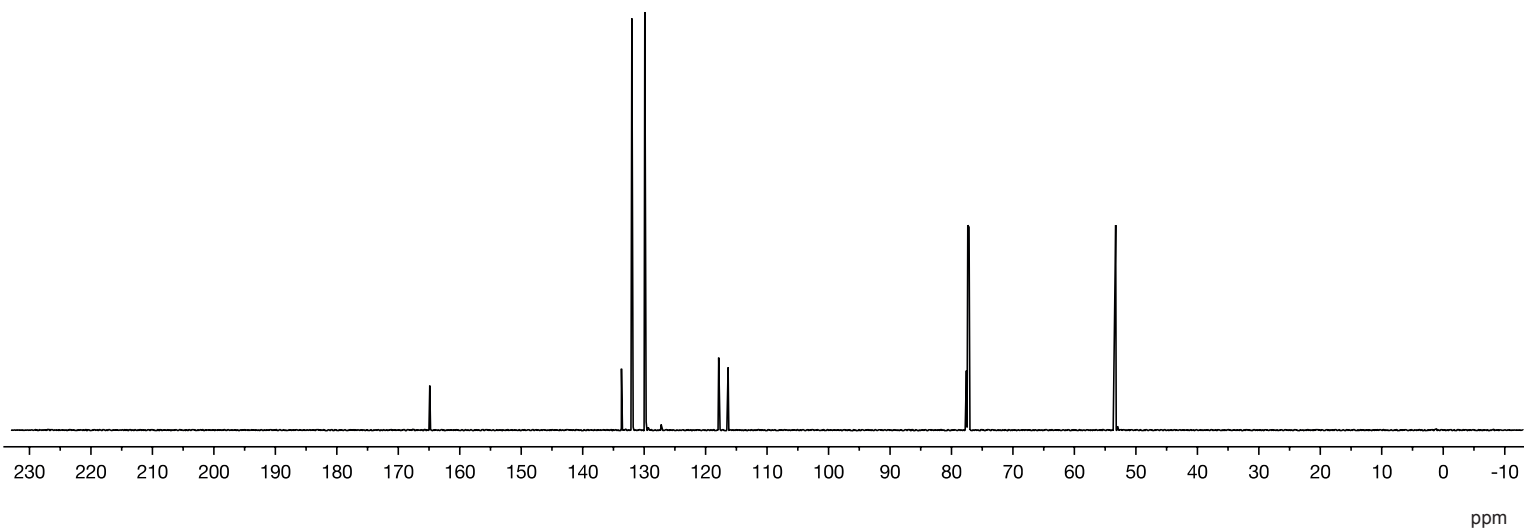


MS: EI, 75 eV



$^1\text{H-NMR}$ : 600 MHz in  $\text{CDCl}_3$ 

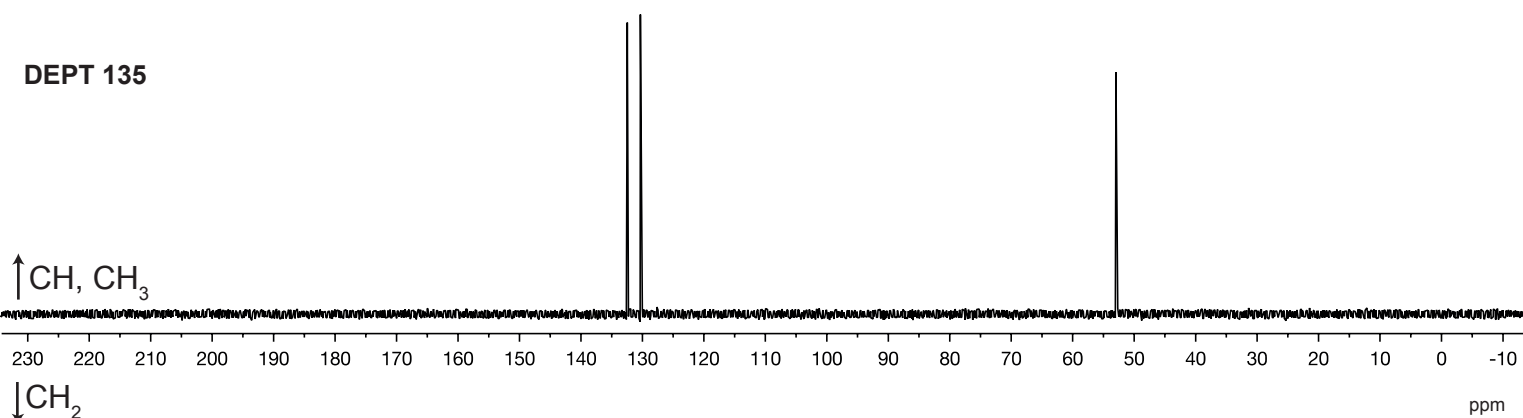
$^{13}\text{C}$ -NMR, unten DEPT 135 und DEPT 90: 150 MHz in  $\text{CDCl}_3$



DEPT 135

↑ CH, CH<sub>3</sub>

↓ CH<sub>2</sub>



DEPT 90

↑ CH

