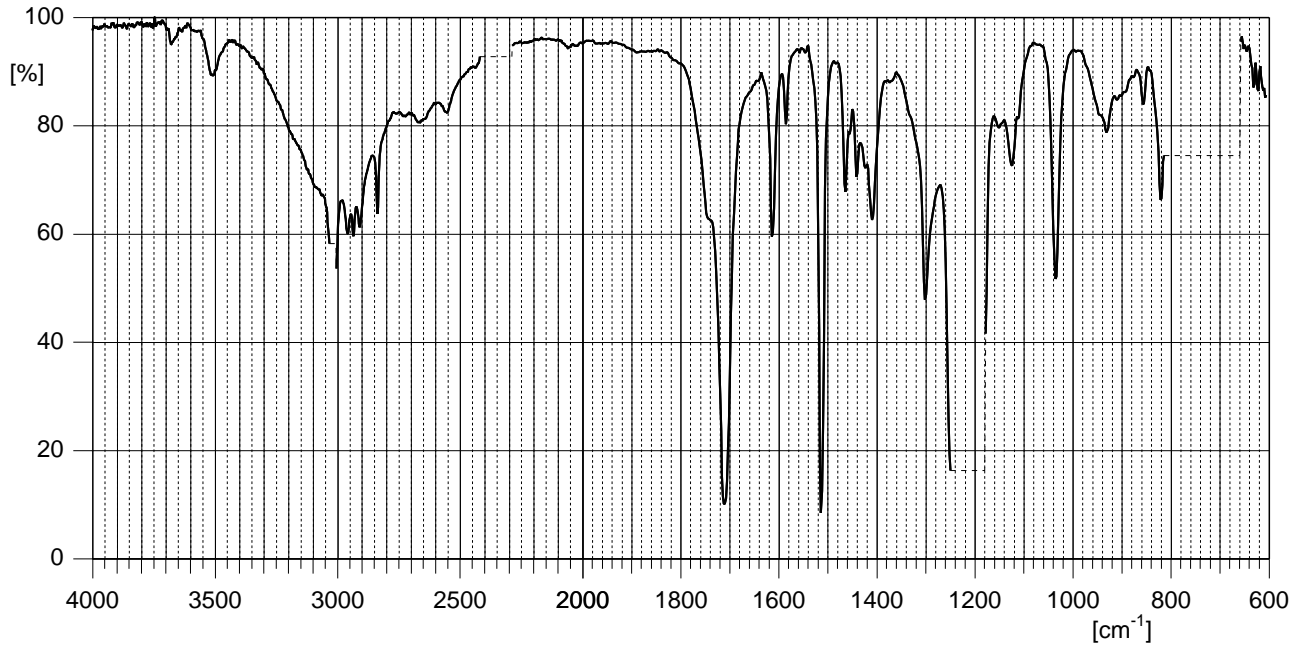
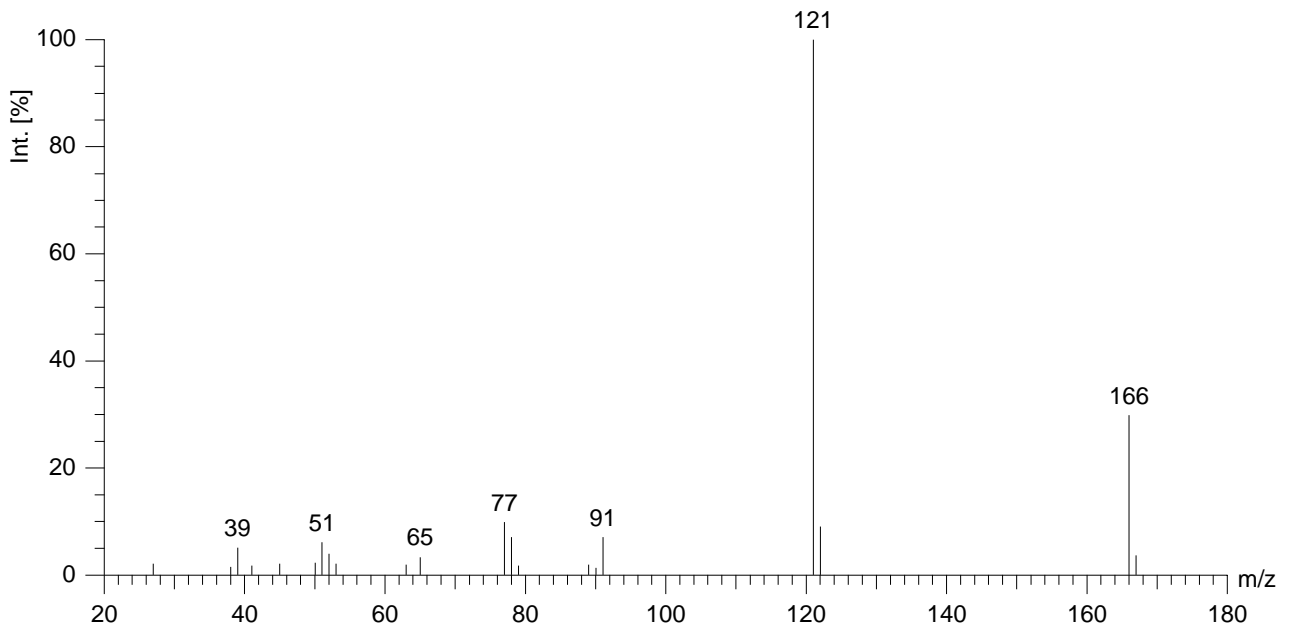


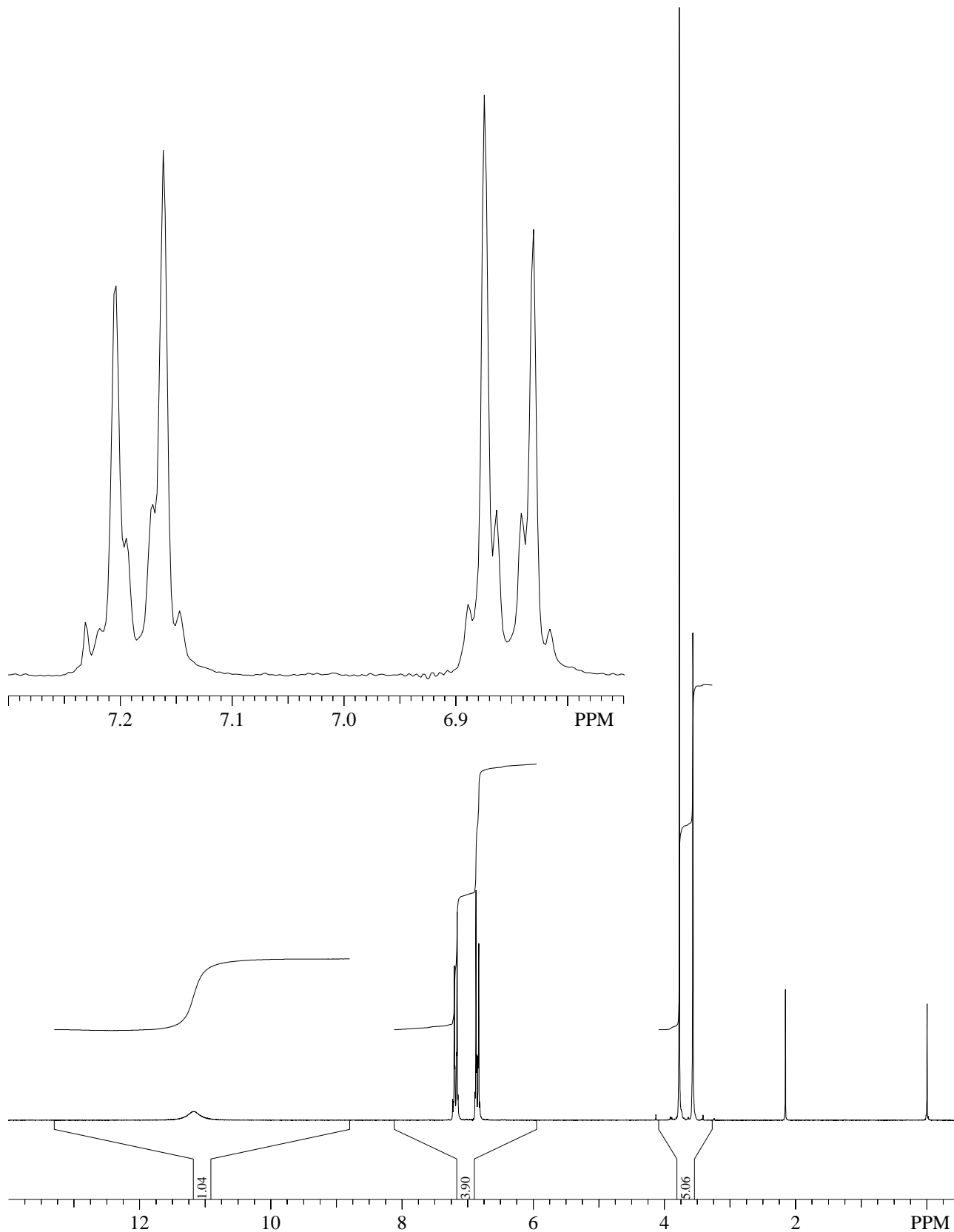
IR: Perkin-Elmer Modell FT-IR 1600
aufgenommen in CHCl_3 , Schichtdicke 0.2mm



MS: EI, 70 eV



¹H-NMR: Bruker-Spectrospin DPX-200 (200 MHz)
aufgenommen in CDCl₃



¹³C-NMR: Bruker-Spectrospin DPX-200 (50 MHz), aufgenommen in CDCl₃
 oben: breitband-entkoppelt
 Mitte: DEPT135 unten: DEPT90

178.4133
 158.8634
 130.4197
 125.3488
 114.0883
 77.6927
 77.0567
 76.4214
 55.2485
 40.1697

