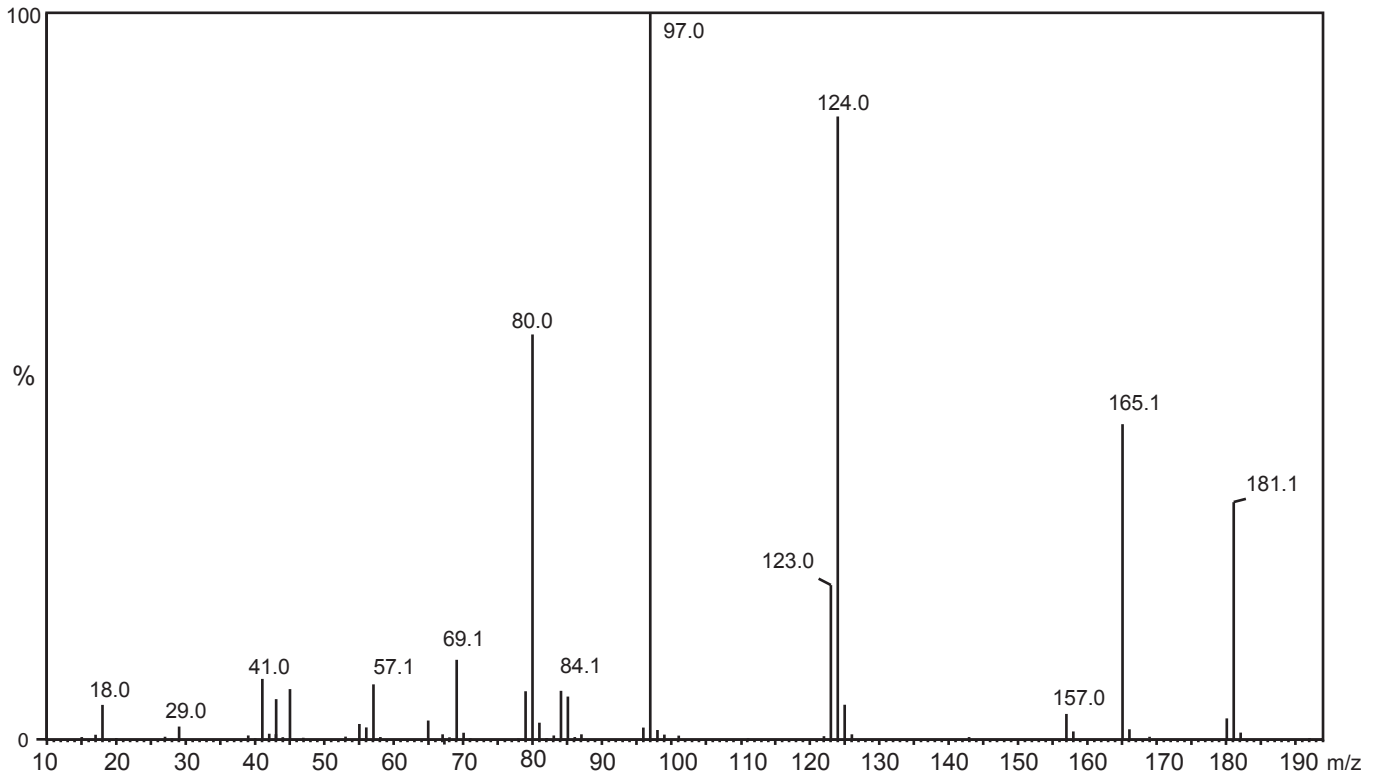
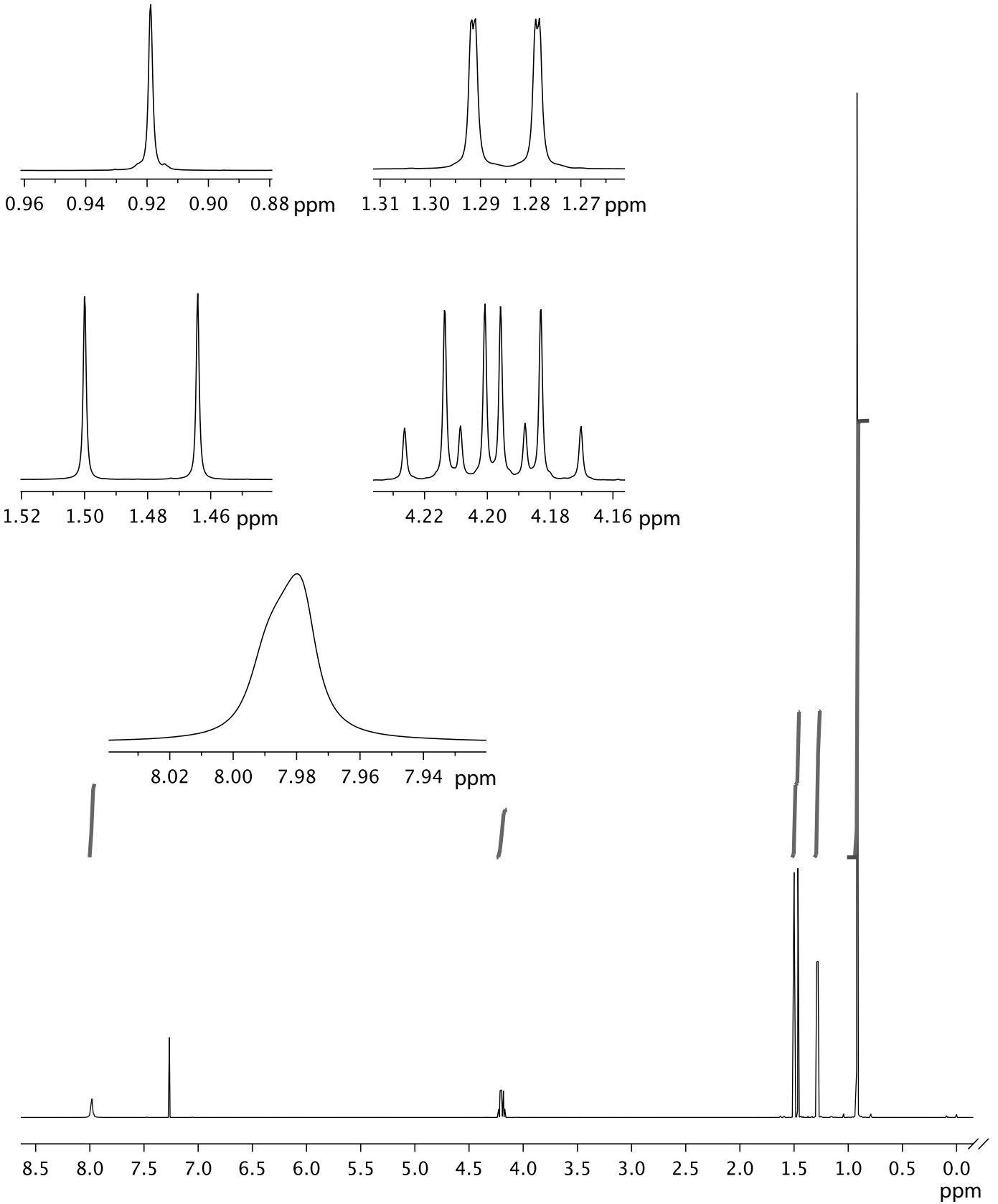
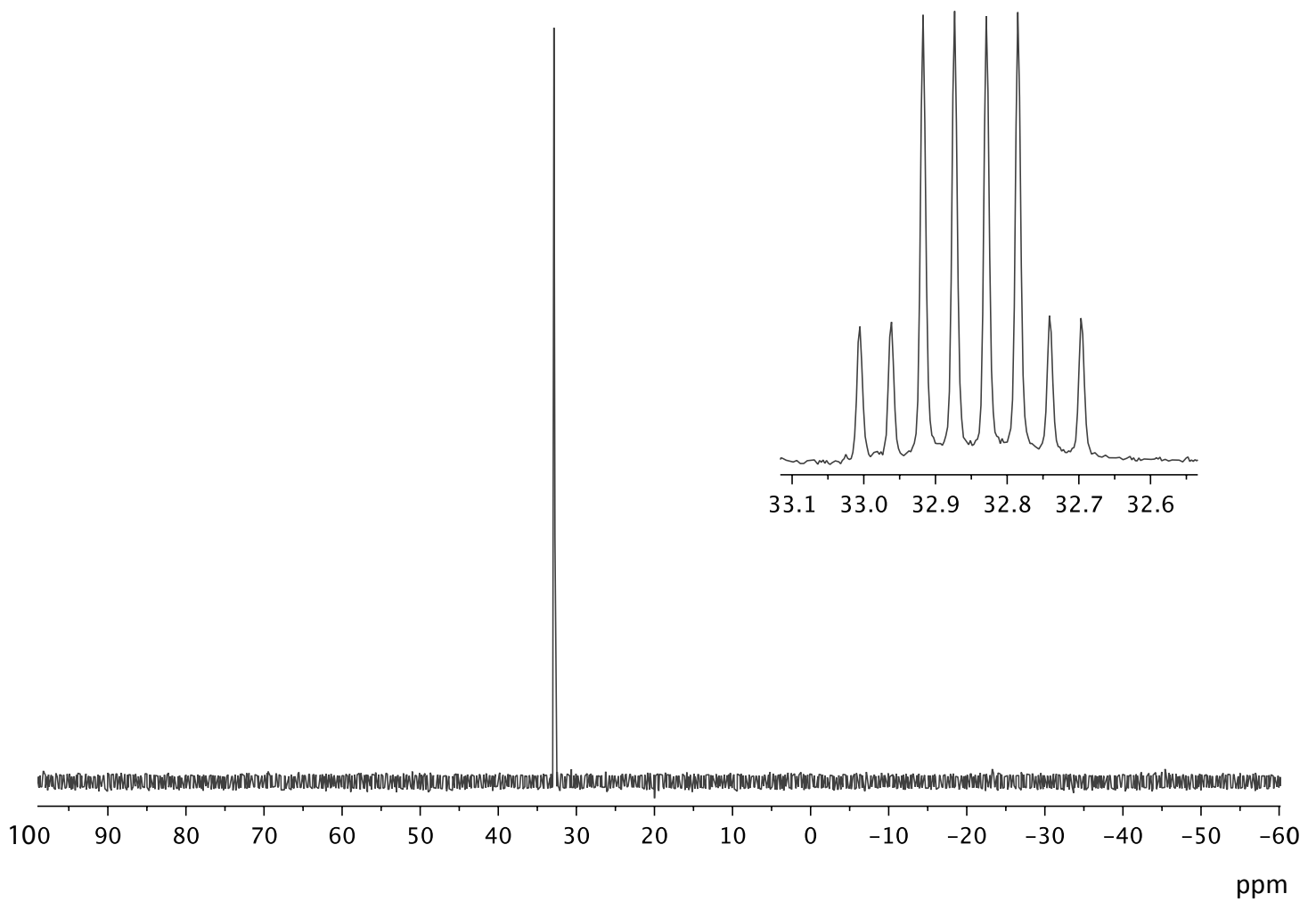


**EI-MS, 75 eV**

**<sup>1</sup>H-NMR: 500MHz, aufgenommen in CDCl<sub>3</sub>**



**<sup>31</sup>P-NMR**: 202.5MHz, aufgenommen in CDCl<sub>3</sub>

<sup>13</sup>C-NMR, unten DEPT135 und DEPT90: 125 MHz, aufgenommen in CDCl<sub>3</sub>

