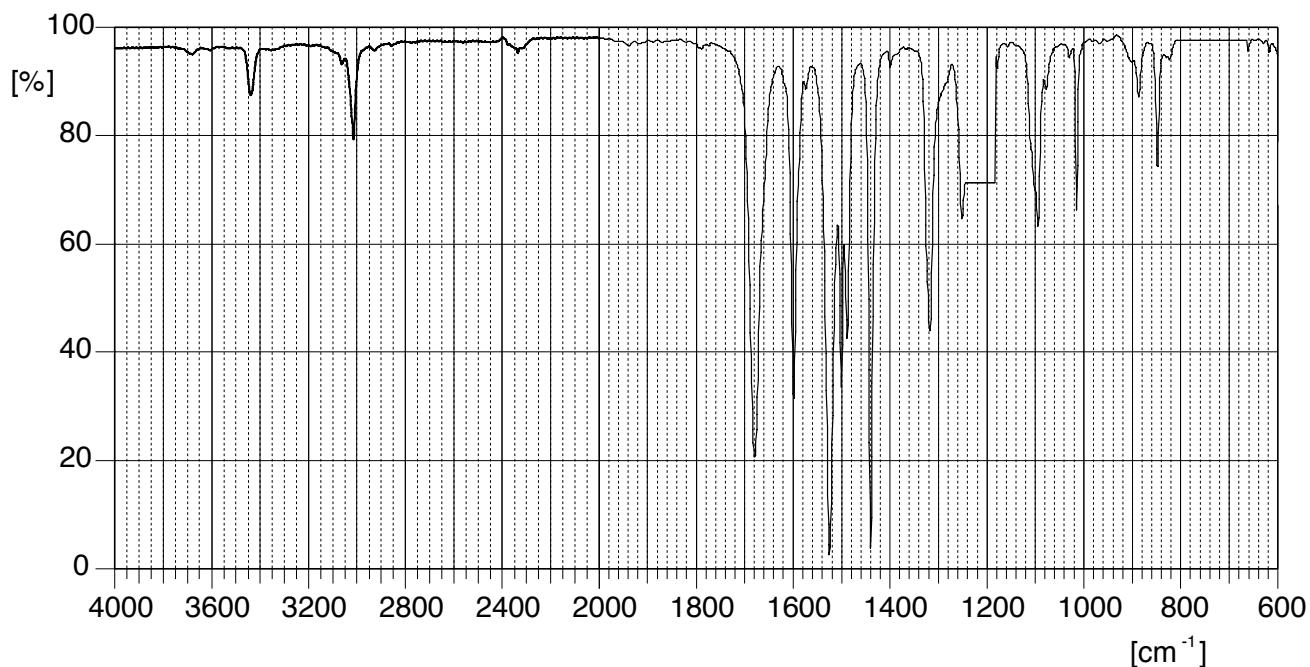
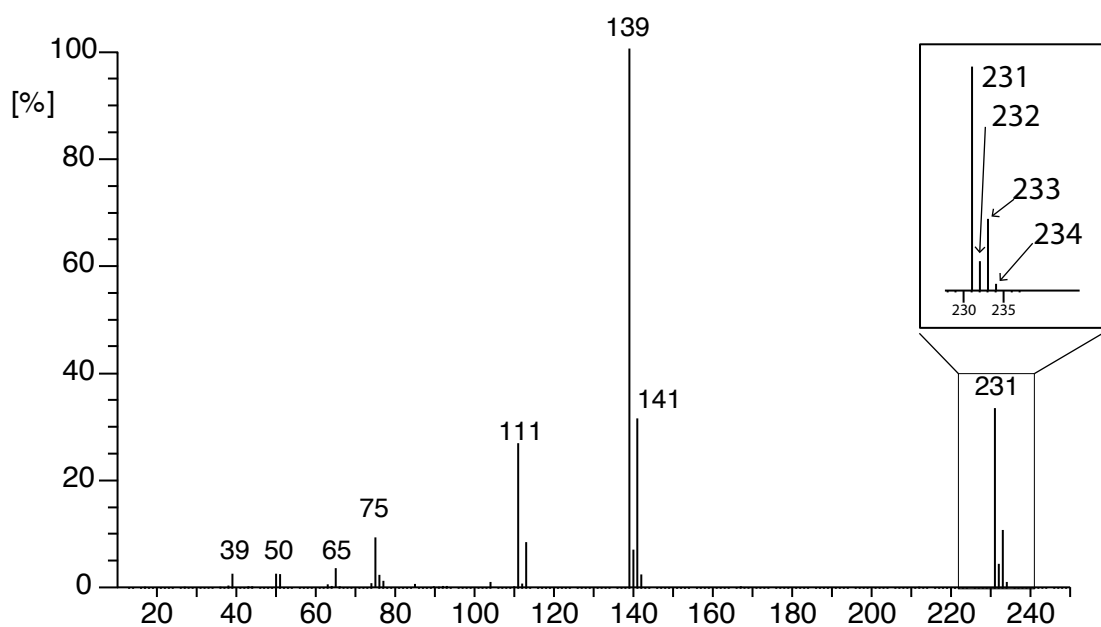


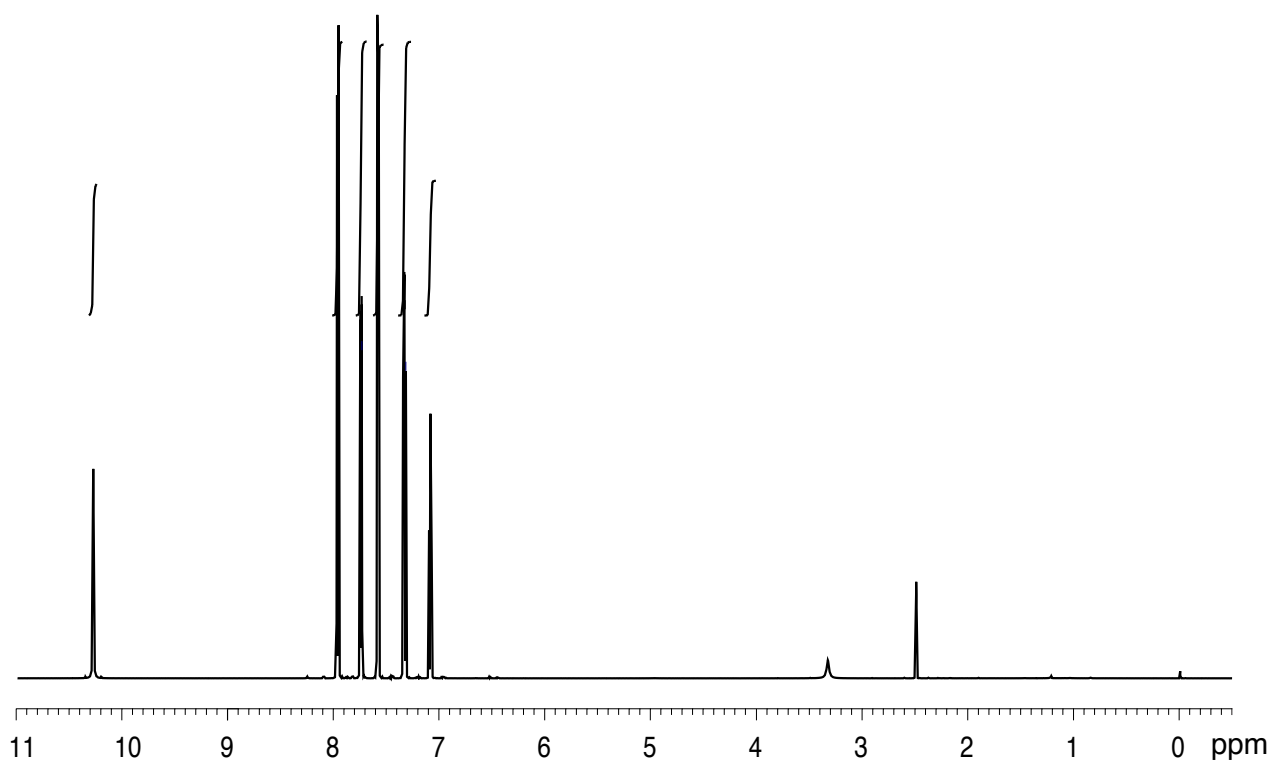
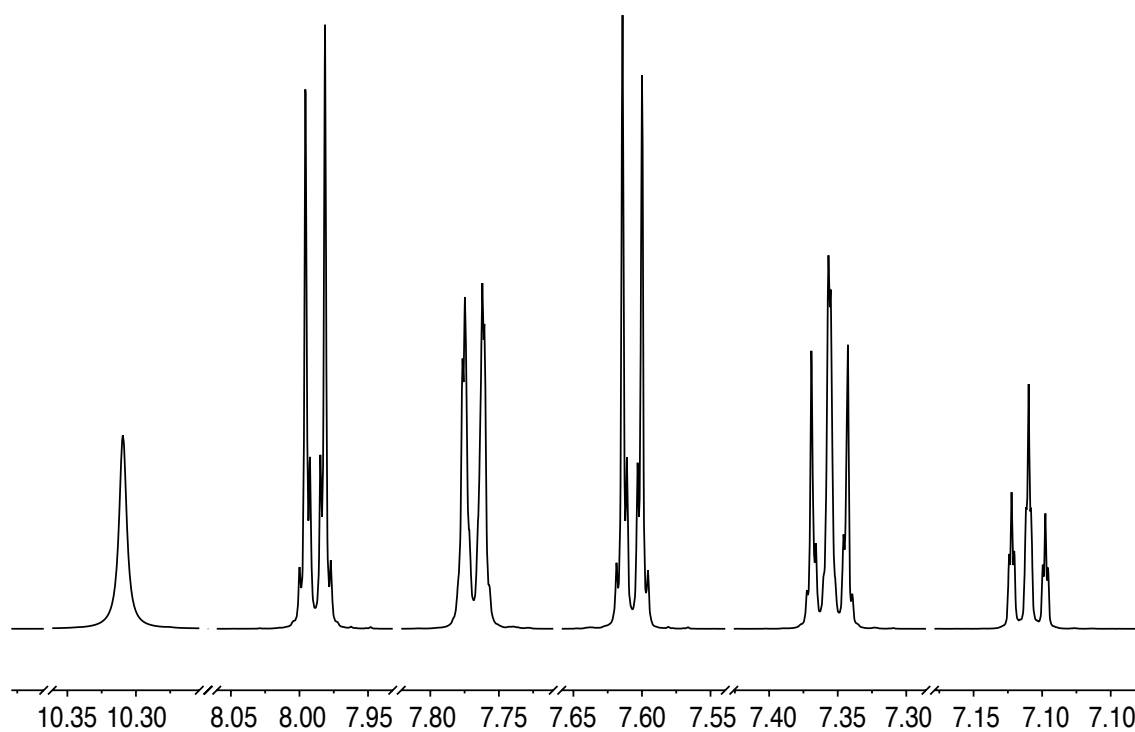
**IR:** Perkin Elmer Modell Spectrum 100  
 CHCl<sub>3</sub>



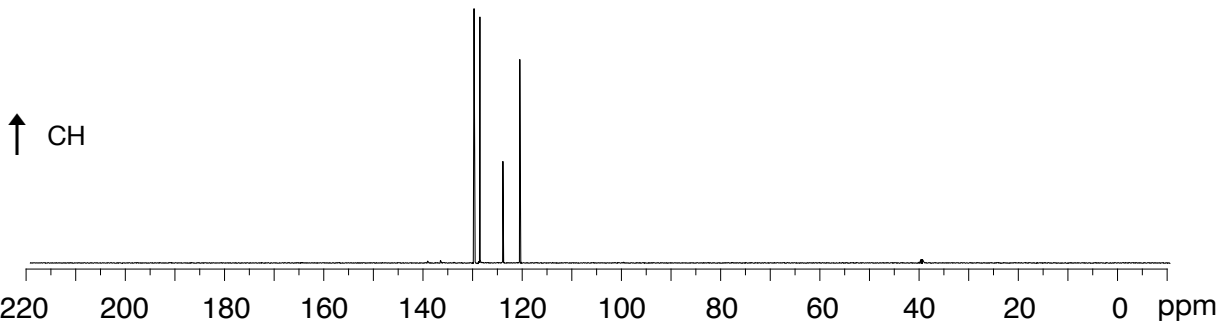
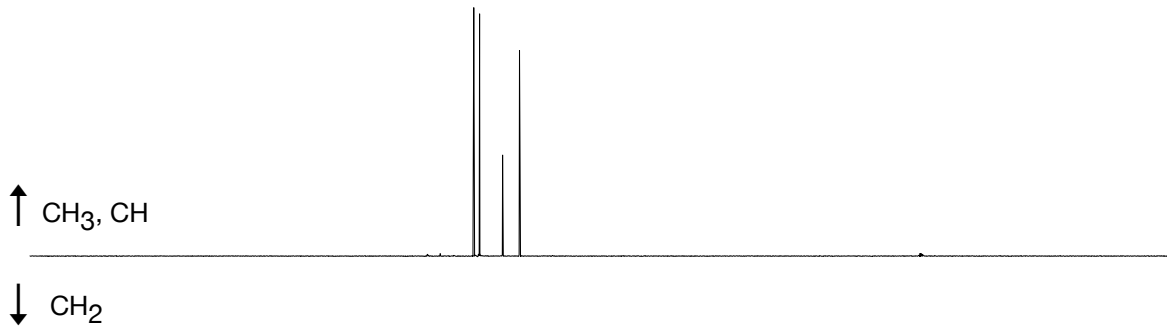
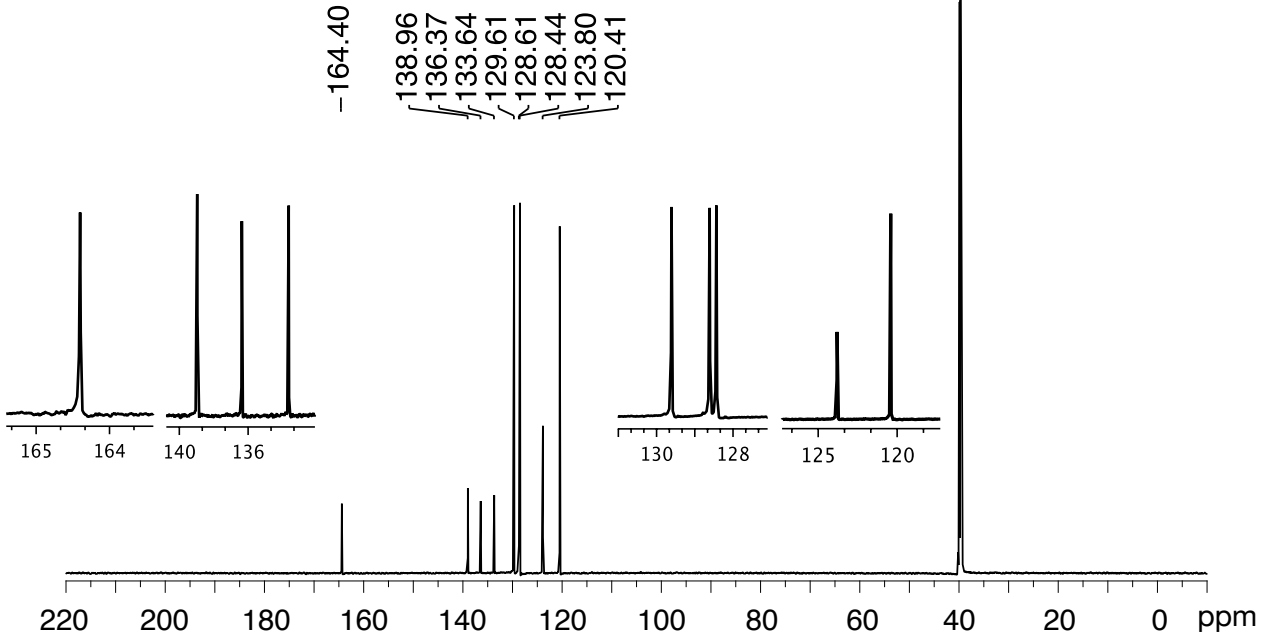
**MS:** EI, 75 eV



<sup>1</sup>H-NMR: 600 MHz, aufgenommen in d6-DMSO



**<sup>13</sup>C-NMR:** 150 MHz, aufgenommen in d6-DMSO  
 oben: breitband-entkoppelt  
 unten: DEPT



**$^1\text{H}$ - $^1\text{H}$ -COSY:** aufgenommen in d6-DMSO

