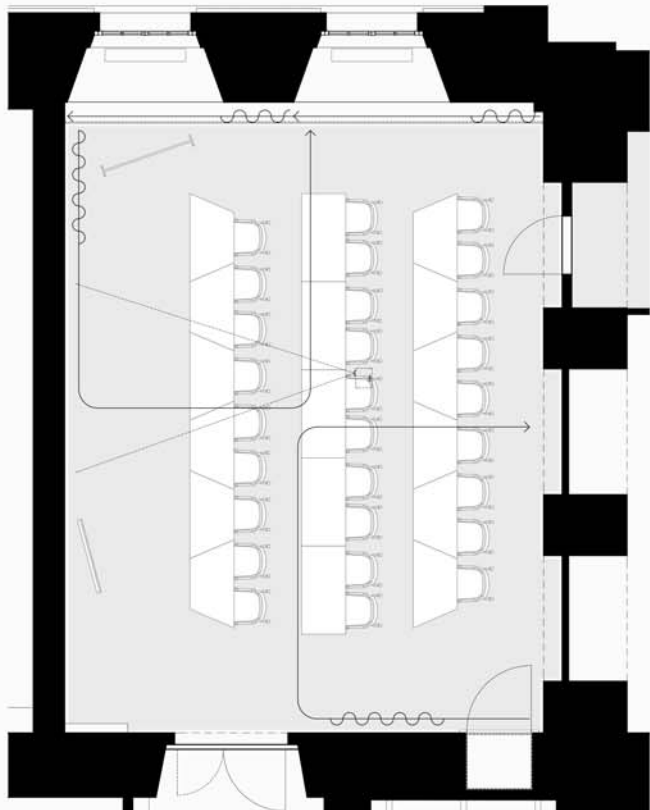
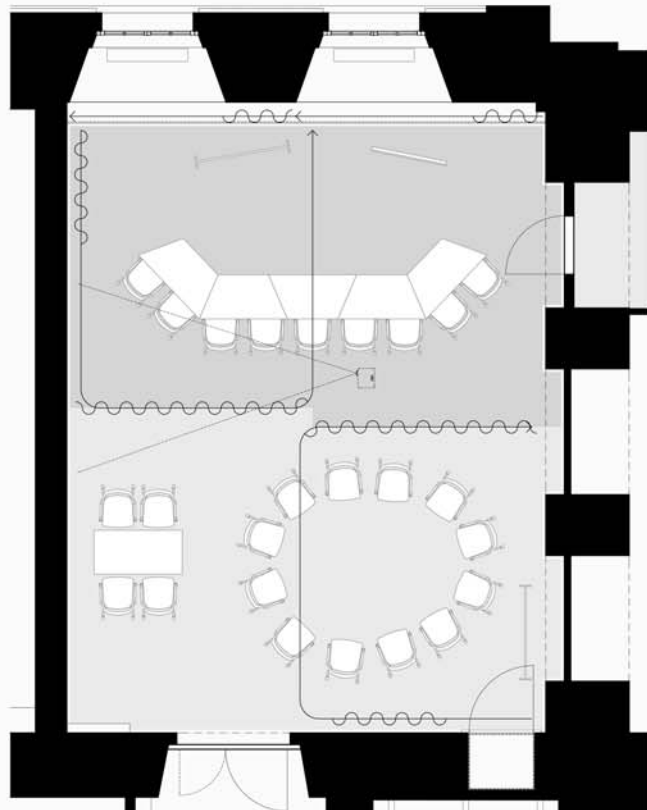


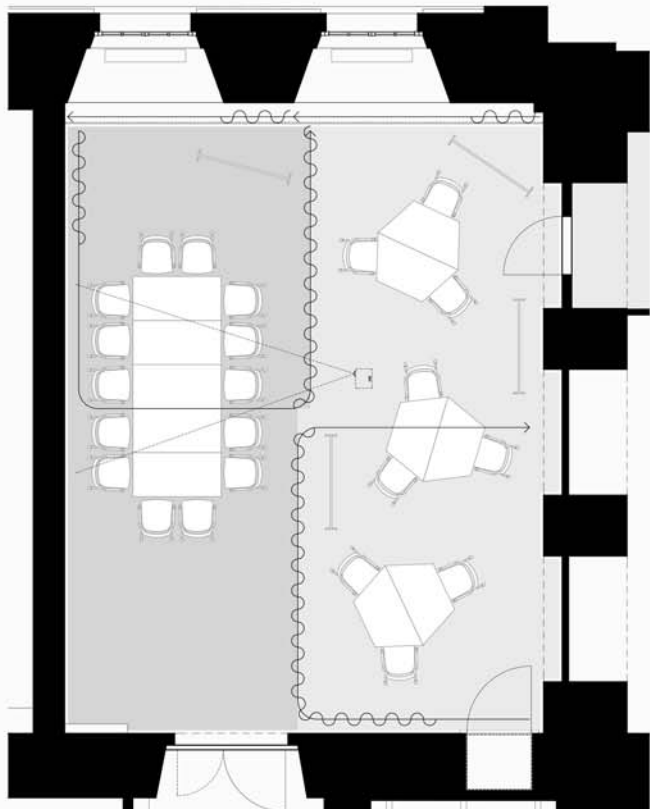
Mögliche Möblierungsvarianten HG D18.1



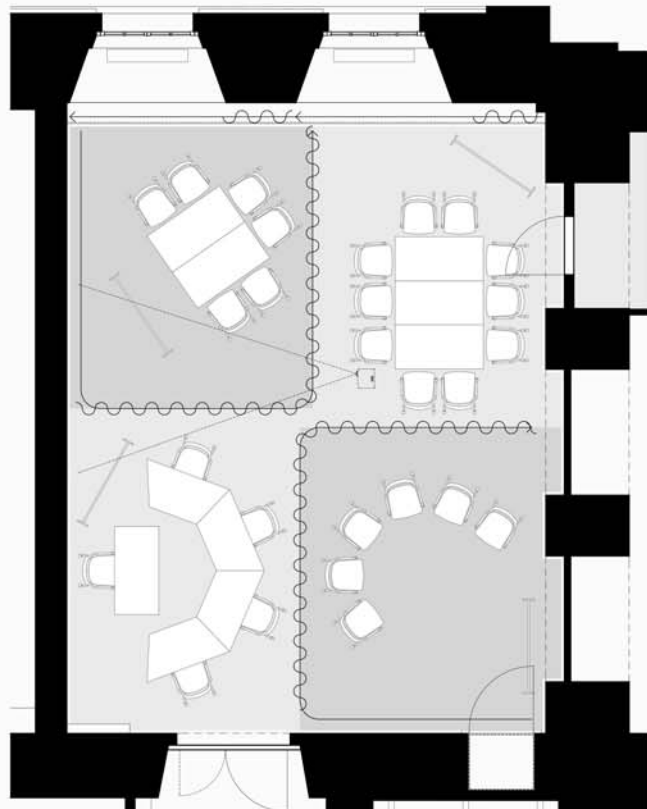
REIHENANORDNUNG, ca. 25-30 Personen



RAUMTEILUNG QUER, ca. 2x 12 Personen



RAUMTEILUNG LÄNGS, ca. 2x 12 Personen



RAUMTEILUNG VIERTEL, 4x 5-8 Personen